

YAMAHA

GENUINE

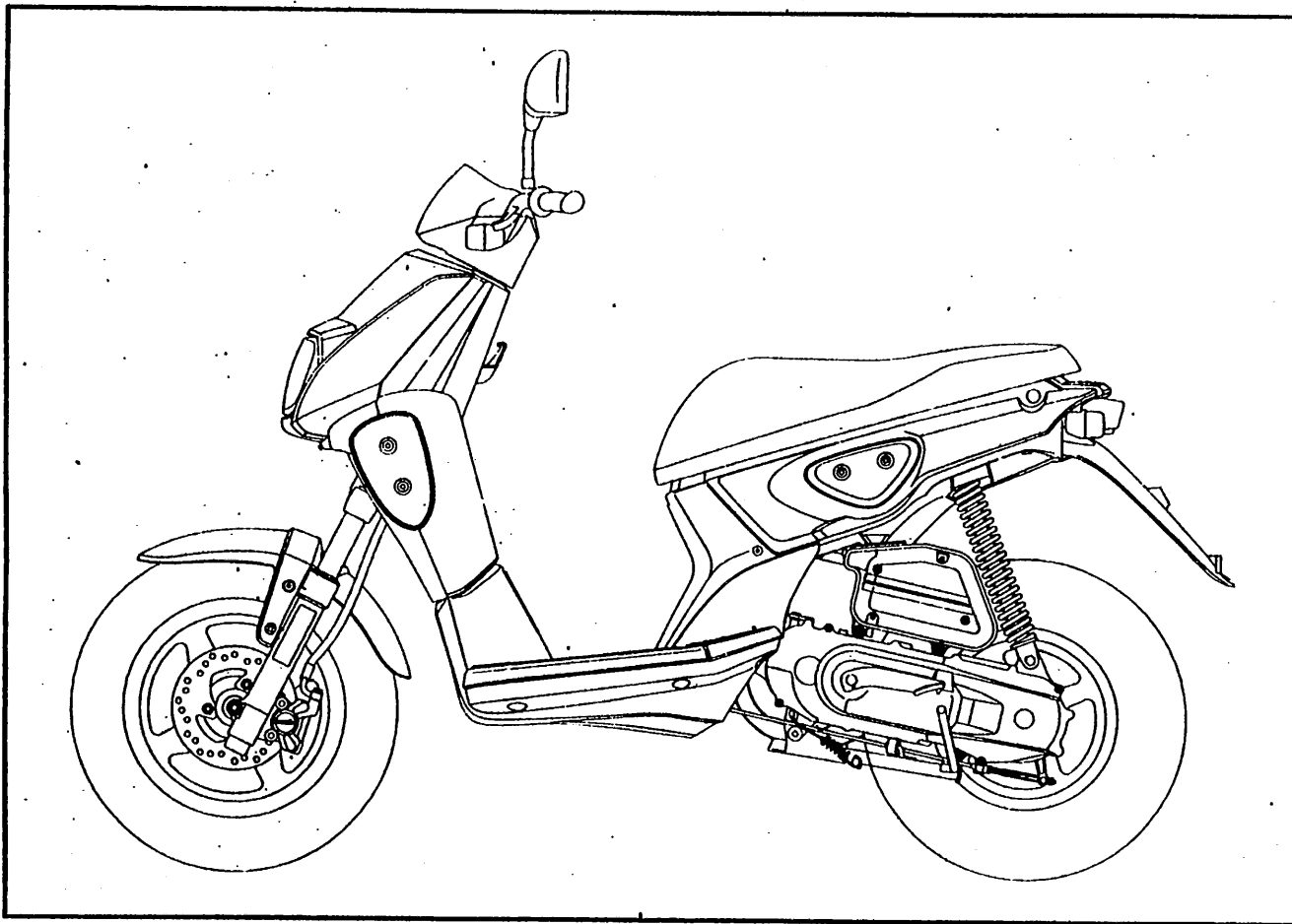
Parts & Accessories

EW50'00 (5LH1)
EUROPE

105LH - 300E1
FEBRUARY 2000

A2





A4

FOREWORD

This Part Catalogue is related to the parts in use for the **EW50'00**

When you are ordering replacements parts for the **EW'00**, refer to this Parts Catalogue and quote both part numbers and part names correctly.

1. Modifications or additions which have been made after issue of the Parts Catalogue will be announced in the Parts News.

It is advisable that according to the Parts News you make necessary corrections to the Parts Catalogue on hand to keep it up-to-date.

2. Abbreviations.

The following abbreviations are used in this Parts Catalogue.

U.R. Use size (thickness) and/or number as required.

U.N. Use as many as you need.

A.P. Alternate Parts.

L.M. Local Made.

F.# Frame N° (Applicable machine N°)

3. The parts marked with (*) in the parts number column of this Catalogue are not supplied with by Yamaha, those have to be found locally.

4. Parts, which are to be supplied in the form of assemblies, are listed with an indentation of one letter's space, and a dot (.) is put against the name of each part.

EXAMPLE CARBURETOR ASS'Y

.JET, pilot

.NOZZLE, main

5. Indication of N° of constituent parts for assembly.

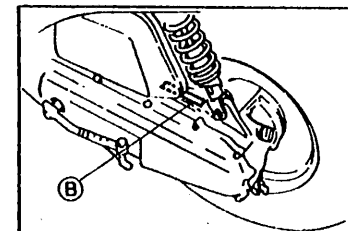
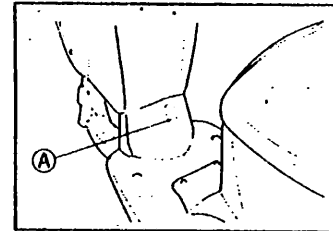
The numeral appearing to the right of each constituent part under the description indicates the quantity of such parts for each individual assembly unit.

EXAMPLE

Part N°	Description	Q'ty	Remarks
2F5-83310-60	FRONT FLASHER LIGHT ASS'Y	2	
115-83311-60	.BULB (6V-18W)	1	
1M1-83309-60	.REFLECTOR	1	

6. Initial Serial N° and Color Code.

(A) Frame Serial N°	CH: VG5SA091005200101 NLD: VG5SA091008200101
(B) Engine Serial N°	A117E-200101



Color Code	Color Name	Abbreviat
0582	MATT BLACK 2	MBL2
0727	LIGHT GRAY METALLIC E	LNME
0026	COMPETITION YELLOW	CPY

7. Applicable colors of graphics are represented in the "Remarks" column by the letter(s) appropriately picked out of the full word(s) showing such colors.

EXAMPLE

Part N°	Description	Q'ty	Remarks
2N4-24110-00-X5	FUEL TANK COMPL.	1	
3J1-24240-10	.GRAPHIC, fuel tank set	1	

CONTENTS

ENGINE

CYLINDER	B2
CRANKSHAFT-PISTON.....	B3
AIR SHROUD-FAN.....	B4
OIL PUMP	B5
INTAKE	B6
CARBURETOR	B7
EXHAUST	B8
CRANKCASE	B9
STARTER.....	B10
CLUTCH.....	B11
TRANSMISSION	B12

CHASSIS

FRAME.....	B13
FENDER.....	B14
SIDE COVER	B15
OIL TANK.....	C2
REAR SUSPENSION	C3
FRONT FORK	C4

FUEL TANK	C5
SEAT CARRIER.....	C6
FRONT WHEEL	C7
FRONT BRAKE CALIPER	C8
REAR WHEEL	C9
STEERING-HANDLE-CABLE	C10
FRONT MASTER CYLINDER	C11
STAND FOOTREST	C12
LEG SHIELD	C13
COWLING	C14
GENERATOR.....	C15
FLASHER LIGHT	D2
METER.....	D3
HEADLIGHT.....	D4
TAILLIGHT	D5
HANDLE-SWITCH-LEVER	D6
ELECTRICAL 1	D7
ELECTRICAL 2	D8
NUMERICAL INDEX	M1 - M2



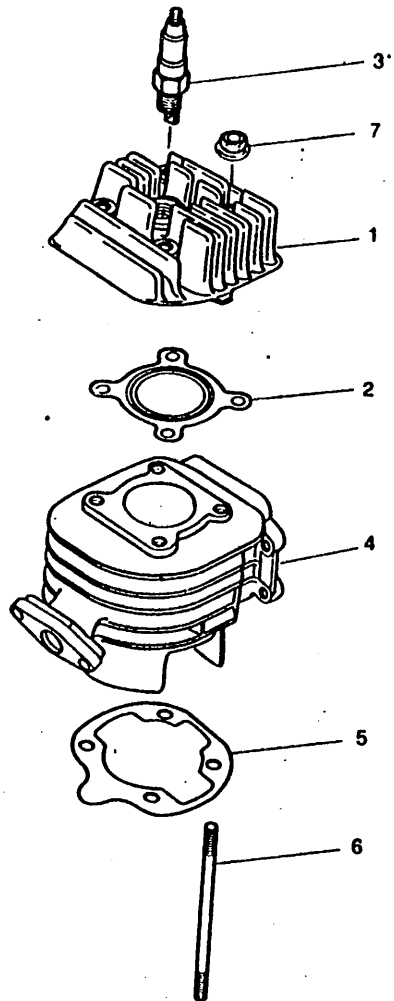


FIG 1 CYLINDER

REF	PART.N°	DESCRIPTION	QTY	REMARKS
1	5FX-E1111-00	HEAD, CYLINDER 1	1	
2	3VL-E1181-00	GASKET, CYLINDER HEAD	1	
3	94701-00195	PLUG, SPARK	1	
4	5FX-E1311-00	CYLINDER 1	1	
5	3VL-E1351-00	GASKET, CYLINDER	1	
6	90116-08418	BOLT, STUD	4	
7	95707-06500	NUT, FLANGE	4	



5FX1354-9011

B2

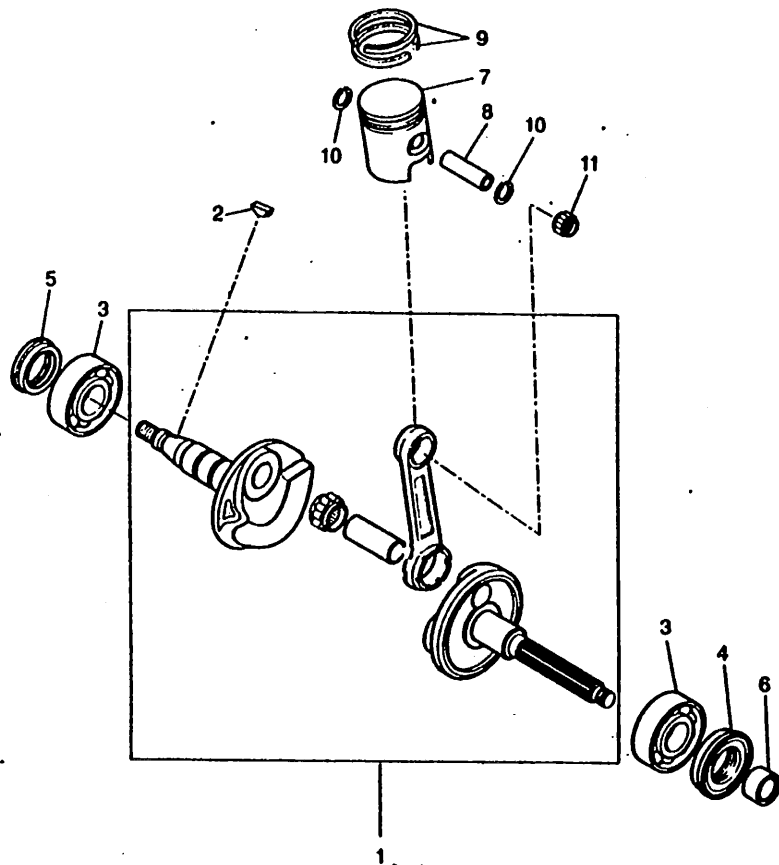


FIG 2 CRANKSHAFT PISTON

REF	PART N°	DESCRIPTION	QTY	REMARKS
1	3VL-E1400-10	CRANKSHAFT ASSY	1	
2	90280-03017	KEY, WOODRUFF	1	
3	93306-204X2	BEARING	2	
4	93102-20371	OIL SEAL	1	
5	93101-20138	OIL SEAL	1	
6	90387-156U0	COLLAR	1	
7	4JP-11631-00-A0	PISTON (STD)	1	
8	3VL-E1633-00	PIN, PISTON	1	
9	3YJ-11610-00	PISTON RING SET	1	
10	93450-11818	CIRCLIP	2	
11	93310-210M0	BEARING, CYLINDRICAL	1	



5JH1351-0022

B3

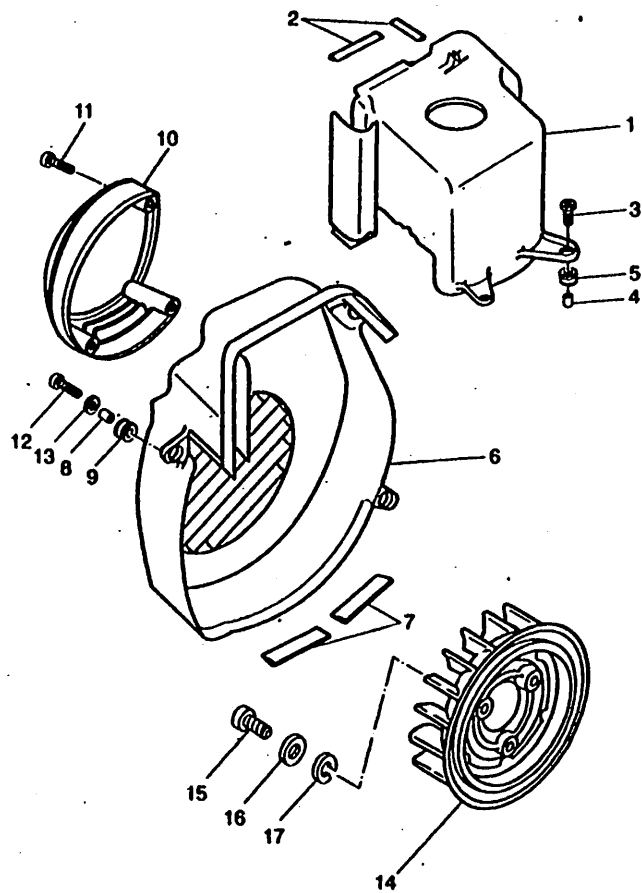


FIG 3 AIR SHROUD. FAN

REF	PART.N°	DESCRIPTION	QTY	REMARKS
1	3VL-E2651-00	AIR SHROUD, CYLINDER	1	
2	3VL-E2658-00	DAMPER, AIR SHROUD 1	2	
3	90153-06022	SCREW, HEXAGON	2	
4	90387-06023	COLLAR	2	
5	90480-12237	GROMMET	2	
6	5FX-E2653-00	AIR SHROUD, CYLINDER 3	1	
7	3VL-E2658-00	DAMPER, AIR SHROUD 1	2	
8	90387-06023	COLLAR	3	
9	90480-12237	GROMMET	3	
10	5FX-E262H-00	COVER,FAN	1	
11	90167-03X04	SCREW, TAPPING	3	
12	98517-06020	SCREW, PAN HEAD	3	
13	92907-06600	WASHER PLAIN	3	
14	3VL-E2611-01	FAN	1	
15	97885-06016	SCREW, PAN HEAD	3	
16	92995-06100	WASHER	3	
17	92990-06600	WASHER, PLATE	3	



5JH1351-0030

B4

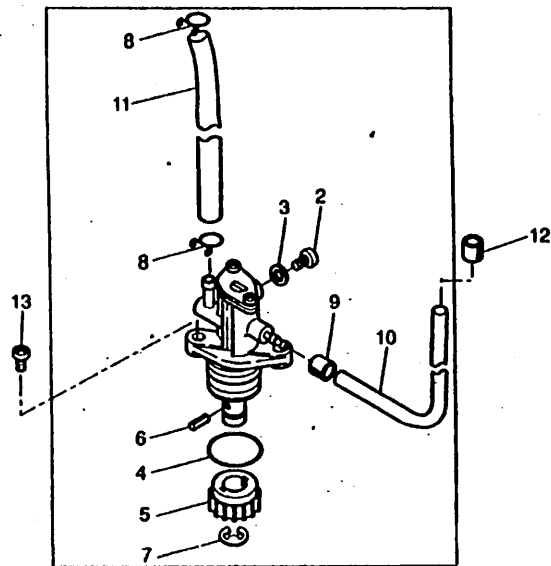
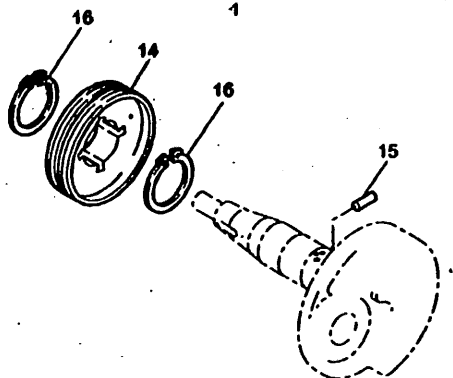


FIG 4 OIL PUMP

REF	PART N°	DESCRIPTION	QTY	REMARKS
1	3AA-13100-02	OIL PUMP ASSY	1	
2	3WF-13185-00	BOLT, BREATHER	1	
3	1YU-13187-00	GASKET, BREATHER BOLT	1	
4	1YU-13473-00	O-RING	1	
5	3AA-13124-00	GEAR, WORM WHEEL	1	
6	1YU-13516-00	PIN, DOWEL	1	
7	1YU-13577-00	CLIP	1	
8	90467-08003	CLIP	2	
9	90468-02033	CLIP	1	
10	1YU-13418-00	PIPE, OIL 2	1	
11	90445-083J5	HOSE	1	
12	90468-02X00	CLIP	1	
13	98507-05014	SCREW	2	
14	3VL-E3178-00	GEAR, PUMP DRIVE	1	
15	93603-12007	PIN, DOWEL	1	
16	99009-19400	CIRCLIP	2	



5JH1351-0041

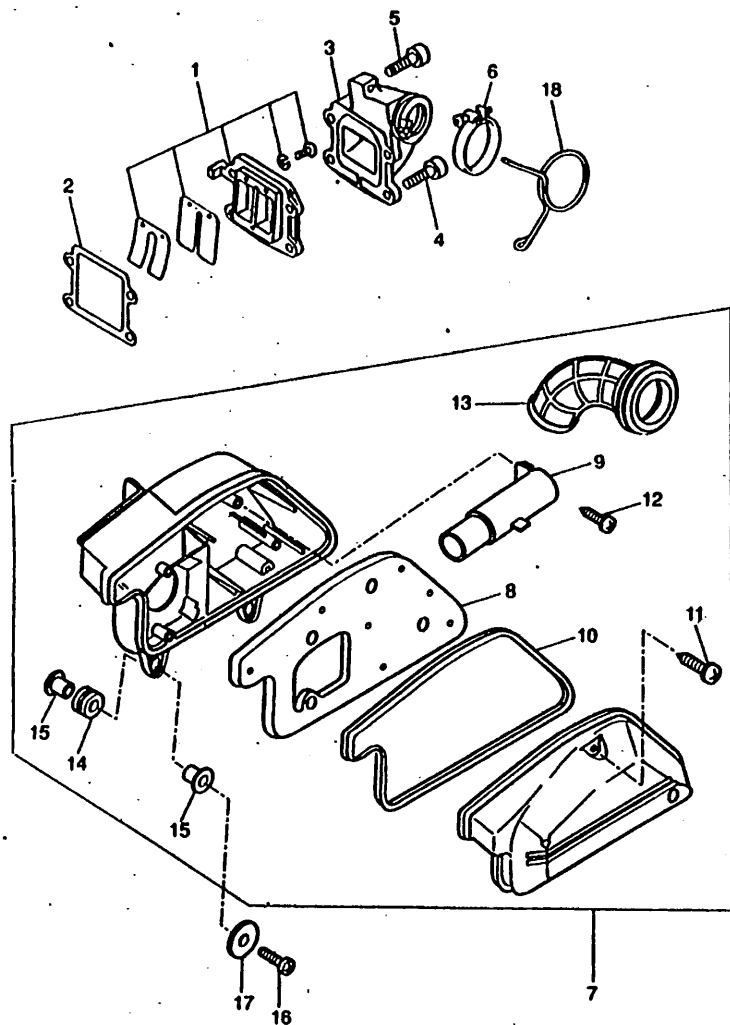


FIG 5 INTAKE

REF	PART.N°	DESCRIPTION	QTY	REMARKS
1	2EX-13610-00	REED VALVE ASSY	1	
2	4KN-13621-00	GASKET, VALVE SEAT	1	
3	3VL-E3555-00	MANIFOLD, INTAKE	1	
4	1TK-E5481-00	BOLT, HEXAGON SOCKET HEAD	2	
5	90149-06X02	SCREW	2	
6	90450-32X01	HOSE CLAMP ASSY	1	
7	5FX-E4410-00	AIR CLEANER ASSY.	1	
8	3VL-E4451-00	ELEMENT, AIR CLEANER	1	
9	3VL-E4437-00	DUCT	1	
10	3VL-E4452-00	SEAL	1	
11	3VL-E4565-00	SCREW	4	
12	3VL-E4429-00	SCREW	1	
13	4VA-E4453-00	JOINT, AIR CLEANER 1	1	
14	90480-12497	GROMMET	2	
15	90387-067V1	COLLAR	2	
16	98517-06020	SCREW, PAN HEAD	2	
17	92907-06800	WASHER PLAIN	2	
18	90467-24140	CLIP	1	



5LH1354-0051

B6

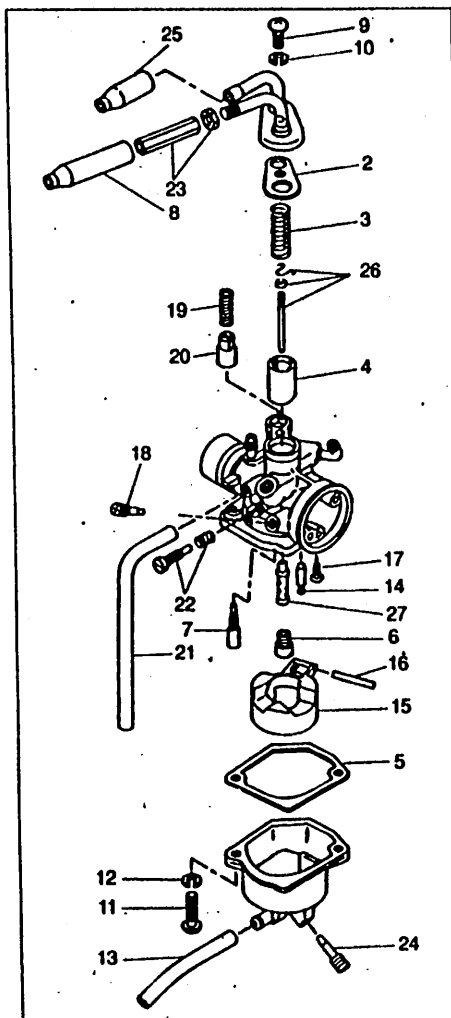


FIG 6 CARBURETOR

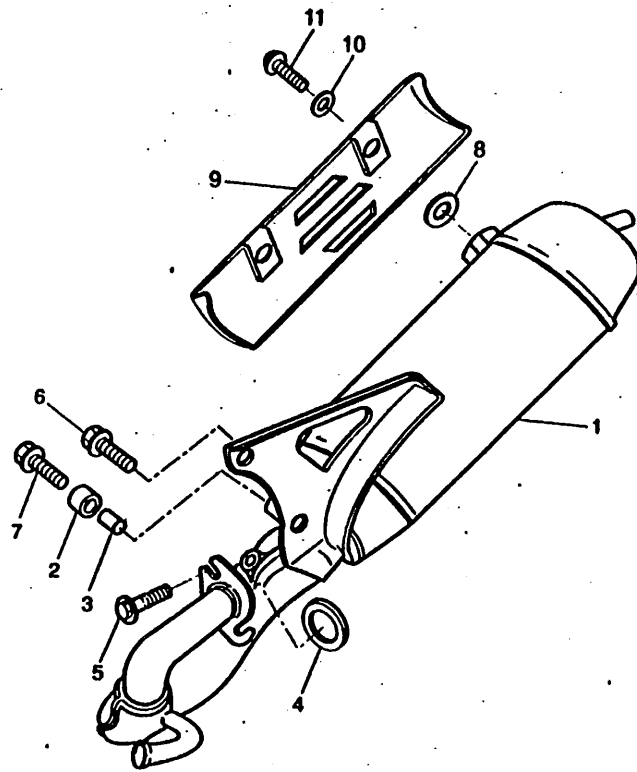
REF	PART.N°	DESCRIPTION	QTY	REMARKS
1	5LH-14301-00	CARBURETOR ASSY 1	1	
2	1YU-14126-00	GASKET	1	
3	1YU-14331-00	SPRING, THROTTLE VAL	1	
4	3KJ-14312-25	VALVE, THROTTLE 1	1	
5	1YU-14384-00	GASKET, FLOAT CHAMBE	1	
6	14T-14343-40	JET, MAIN	1	
7	3KJ-14353-21	JET, PILOT	1	
8	1UV-14169-00	CAP	1	
9	97885-05012	SCREW, PAN HEAD	1	
10	92901-05100	WASHER, SPRING	1	
11	98580-04016	SCREW, PAN HEAD	2	
12	92980-04100	WASHER, SPRING	2	
13	3AA-14349-00	PIPE	1	
14	2JA-14392-00	VALVE, NEEDLE	1	
15	1YU-14385-00	FLOAT	1	
16	14T-14386-00	PIN, FLOAT	1	
17	98580-03006	SCREW, PAN HEAD	1	
18	14T-14104-00	SCREW, AIR ADJUSTING	1	
19	1YU-14335-00	SPRING, PLUNGER	1	
20	1YU-14371-00	PLUNGER, STARTER	1	
21	1YU-14197-01	PIPE	1	
22	1YU-14103-00	THROTTLE SCREW SET	1	
23	1UV-14106-00	CABLE ADJUST SCREWS	1	
24	14T-14104-00	AIR SCREW SET	1	
25	14T-14169-00	CAP	1	
26	4FW-1490J-00	NEEDLE SET	1	
27	3VR-14341-00	NOZZLE, MAIN	1	
28	1YU-14283-01	COVER, CARBURETOR 1	1	



5FX1354-9060

B7

FIG 7 EXHAUST

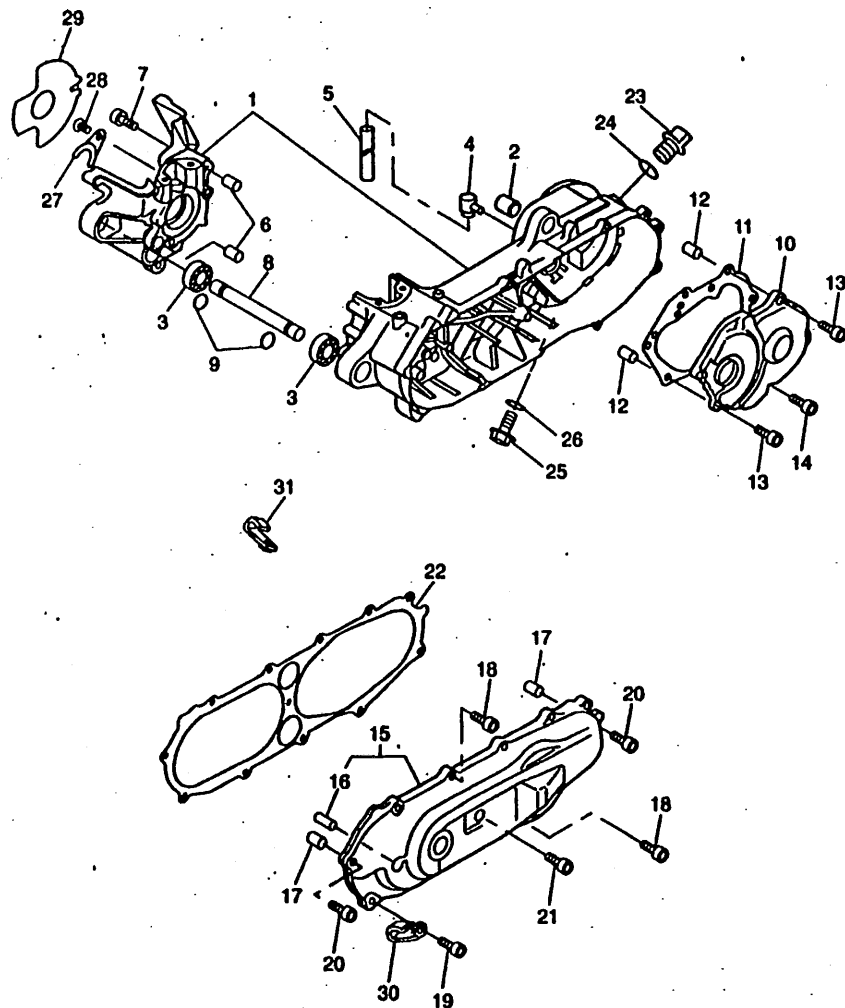


REF	PART.N°	DESCRIPTION	QTY	REMARKS
1	5LH-E4610-00	EXHAUST PIPE ASSY 1	1	
2	4MJ-E4445-00	.GROMMET	1	
3	5EU-E4779-00	.COLLAR	1	
4	3HK-14613-00	GASKET, EXHAUST PIPE	1	
5	90153-06061	SCREW, HEXAGON	2	
6	95817-08020	BOLT, FLANGE	1	
7	95817-08040	BOLT, FLANGE	1	
8	3WX-14766-00	WASHER, PROTECTOR	2	
9	4VV-E4729-01-33	EMBLEM, PROTECTOR	1	UR YB MBL2/LNME
10	3HL-F2245-00	WASHER	2	
11	90154-06X05	SCREW, BINDING	2	



5LH1354-0080

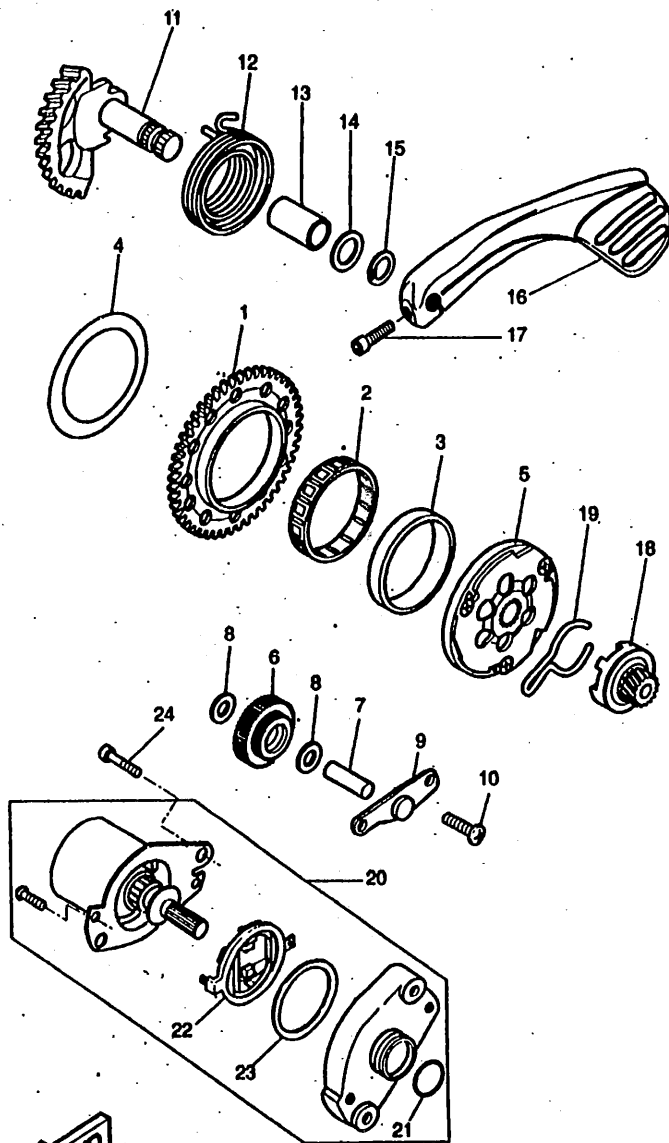
B8



FWD
5JH1351-0090

FIG 8 CRANKCASE

REF	PART.N°	DESCRIPTION	QTY	REMARKS
1	3VL-E5150-00	CRANKCASE ASSY	1	
2	164-22216-00	BUSH, REAR SHOCK ABS	1	
3	93306-00201	BEARING (B6002)	2	
4	3VL-E5371-00	BREATHER	1	
5	90446-13311	HOSE	1	
6	99510-12016	PIN, DOWEL	2	
7	1TL-E5481-00	BOLT, HEXAGON SOCKET HEAD (YE	6	
8	3VL-E5317-00	SPACER, ENGINE MOUNT	1	
9	99009-15400	CIRCLIP	2	
10	3VL-E5421-00	COVER, CRANKCASE 2	1	
11	3VL-E5481-00	GASKET, CRANKCASE CO	1	
12	99530-10014	PIN, DOWEL	2	
13	1TL-E5481-00	BOLT, HEXAGON SOCKET HEAD (YE	2	
14	1TK-E5481-00	BOLT, HEXAGON SOCKET HEAD	4	
15	3VL-E5411-10	COVER, CRANKCASE 1	1	
16	3VL-E5659-00	SHAFT	1	
17	99530-10014	PIN, DOWEL	2	
18	1TK-E3573-00	BOLT, HEXAGON SOCKET HEAD (YE	8	
19	90110-06825	BOLT, HEXAGON SOCKET HEAD	1	
20	1TL-E5481-00	BOLT, HEXAGON SOCKET HEAD (YE	2	
21	1TK-E5187-00	BOLT, HEXAGON SOCKET HEAD (YE	1	
22	3VL-E5451-00	GASKET, CRANKCASE CO	1	
23	3VL-E5383-00	PLUG, OIL	1	
24	93210-14104	O-RING	1	
25	90105-08X04	BOLT, WASHER BASED	1	
26	90430-08206	GASKET	1	
27	3VL-E5128-00	HOLDER	1	
28	98517-08012	SCREW, PAN HEAD	1	
29	3VL-E5462-00	GASKET, CRANKCASE CO	1	
30	90465-08X00	CLAMP	1	
31	4SB-F1238-00	BRACKET	1	

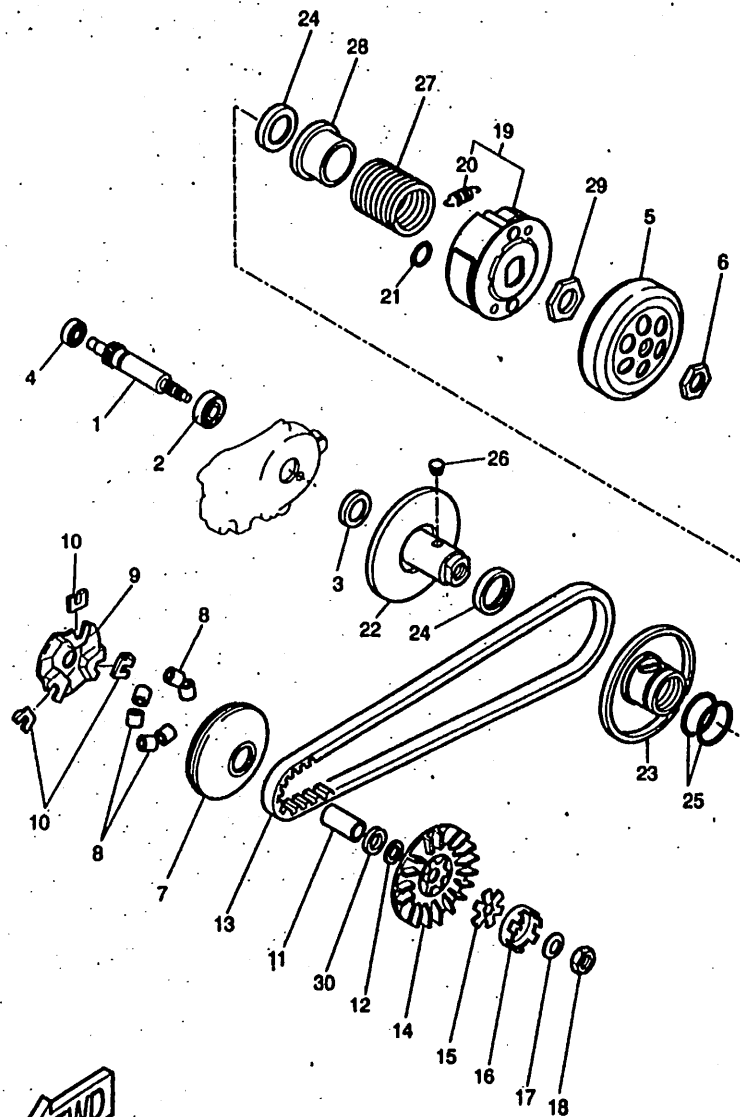


5JH1351-0100

FIG 9 STARTER

REF	PART.N°	DESCRIPTION	QTY	REMARKS
1	3AA-15513-00	GEAR 1	1	
2	93310-257R1	BEARING, CYLINDRICAL	1	
3	3VL-E5528-00	BOSS, GEAR	1	
4	90201-574L1	WASHER, PLATE	1	
5	3VL-15570-00	STARTER CLUTCH ASSY	1	
6	4SB-E5650-00	IDLE GEAR ASSY	1	
7	3VL-E5659-00	SHAFT	1	
8	90201-08X00	WASHER, PLAIN	2	
9	3VL-E5532-00	PLATE, IDLE GEAR	1	
10	98517-08012	SCREW, PAN HEAD	2	
11	3ES-15601-02	KICK SHAFT ASSY	1	
12	90508-32609	SPRING, TORSION	1	
13	90380-15X00	BUSH, SOLID	1	
14	90201-154E9	WASHER, PLAIN	1	
15	99009-15400	CIRCLIP	1	
16	5FX-E5620-01	KICK CRANK ASSY	1	
17	90110-06X16	BOLT, HEXAGON SOCKET HEAD	1	
18	4SB-E5631-00	GEAR, KICK PINION	1	
19	3VL-E5673-00	CLIP	1	
20	4SB-H1800-00	STARTING MOTOR ASSY	1	
21	93210-23614	O-RING	1	
22	1YU-81801-M0	BRUSH SET	1	
23	53L-8181Y-M0	GASKET, YOKE	2	
24	1TK-E5481-00	BOLT, HEXAGON SOCKET HEAD	2	

B10

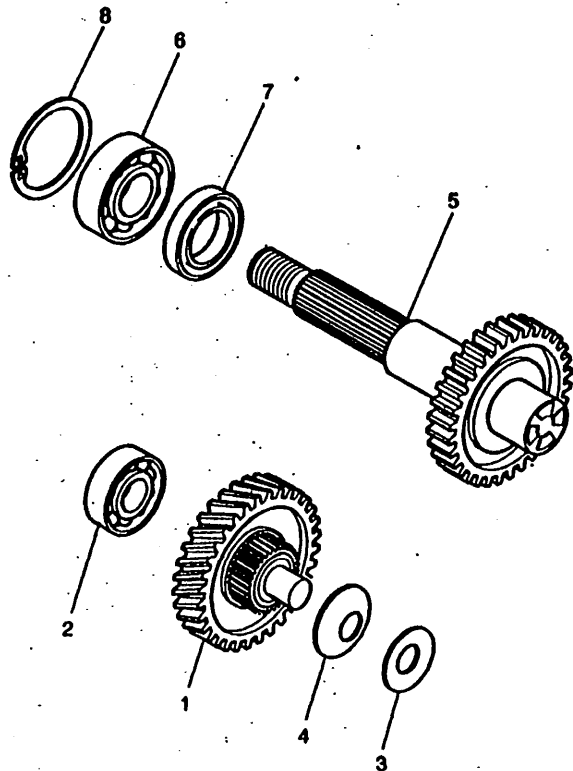


5JH1351-0110

FIG 10 CLUTCH

REF	PART.N°	DESCRIPTION	QTY	REMARKS
1	3VL-E8111-00	GEAR, PRIMARY DRIVE	1	
2	93306-203Y0	BEARING	1	
3	93102-17342	OIL SEAL	1	
4	93306-20009	BEARING (B6200)	1	
5	5JH-E6611-00	CLUTCH HOUSING COMP.	1	
6	90170-10X01	NUT	1	
7	4CU-E7620-00	PRIMARY SLIDING SHEAVE COMP.	1	
8	5JH-E7632-00	WEIGHT	6	
9	3VL-E7623-00	CAM	1	
10	3VL-E7653-00	SLIDER	3	
11	90387-135U9	COLLAR	1	
12	90201-133M8	WASHER, PLAIN	1	
13	3AA-17641-00	V-BELT	1	
14	3VL-E7611-00	SHEAVE, PRIMARY FIXE	1	
15	90214-13055	WASHER, CLAW (0.5T)	1	
16	3KJ-15657-00	CLUTCH, ONEWAY	1	
17	90208-10012	WASHER, CONICAL SPRI	1	
18	90170-10219	NUT	1	
19	5JH-E6820-00	CLUTCH CARRIER ASSY	1	
20	5JH-E6826-00	SPRING, CLUTCH WEIGHT 1	3	
21	93410-06827	CIRCLIP	3	
22	5EU-E7660-00	SECONDARY FIXED SHEAVE COMP.	1	
23	5EU-E7670-00	SECONDARY SLIDING SHEAVE	1	
24	93109-33826	O-RING	2	
25	93210-39X00	O-RING	2	
26	5EU-E7664-00	PIN, GUIDE	2	
27	90501-35X00	SPRING, COMPRESSION	1	
28	3VL-E7604-00	SEAT SPRING SET	1	
29	90179-28X00	NUT	1	
30	4EF-E7654-00	SPACER 1	1	

FIG 11 TRANSMISSION



REF	PART.N°	DESCRIPTION	QTY	REMARKS
1	4SB-E7410-00	MAIN AXLE COMP.	1	
2	93306-20009	BEARING (B6200)	1	
3	90201-140G5	WASHER, PLATE	1	
4	90208-14047	WASHER, CONICAL SPRI	1	
5	5AD-E7420-00	DRIVE AXLE ASSY	1	
6	93306-203YF	BEARING	1	
7	93102-22897	OIL SEAL	1	
8	93420-40064	CIRCLIP	1	

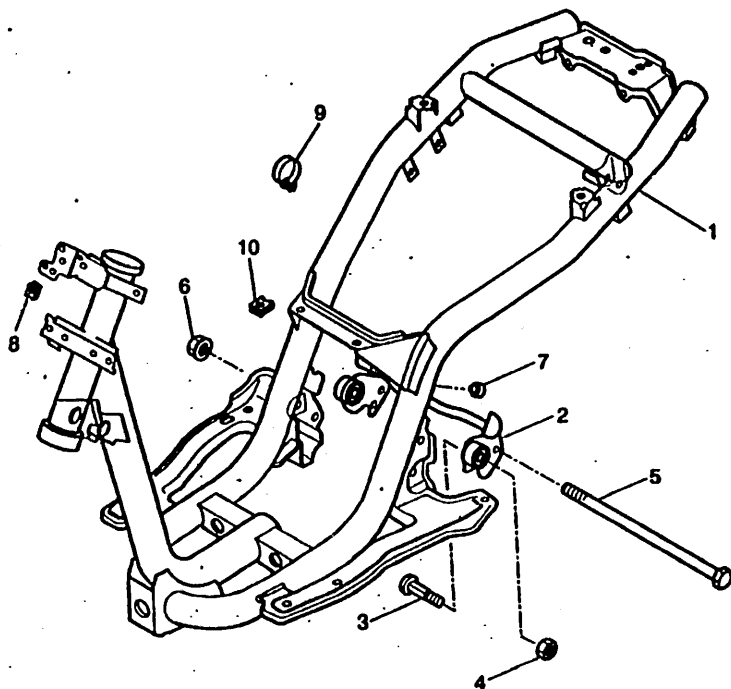


5FX1354-9120

B12

FIG 12 FRAME

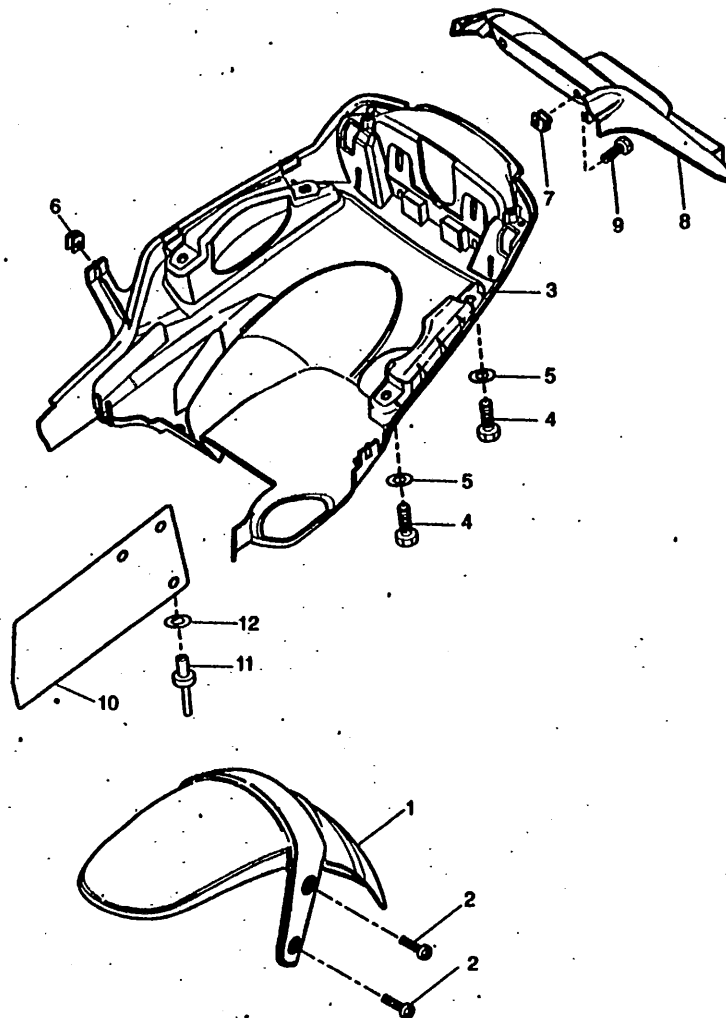
REF	PART.N°	DESCRIPTION	QTY	REMARKS
1	5JH-F1110-00	FRAME COMP.	1	YAMAHA BLACK
2	5JH-F1410-00	ENGINE BRACKET COMP.	1	YAMAHA BLACK
3	5G3-21481-00	BOLT,ENGINE MOUNTING	2	
4	90185-10154	NUT, SELF-LOCKING	2	
5	90105-10297	BOLT, WASHER BASED	1	
6	90179-10279	NUT, POP	1	
7	3VL-F4741-10	PAD, SEAT	2	
8	90183-06X00	NUT, SPRING	2	
9	90464-22X00	CLAMP	1	
10	90183-05X00	NUT, SPRING	2	



5JH1351-0131

B13

FIG 13 FENDER



REF	PART.N°	DESCRIPTION	QTY	REMARKS
1	5JH-F1558-00	FENDER, FRONT 2	1	UR FOR MBL2/CPY
	5JH-F1558-10	FENDER, FRONT 2	1	UR FOR LNME
2	90154-06X05	SCREW, BINDING	4	
3	5JH-F1629-00	GUARD, MUD	1	UR FOR MBL2/CPY
	5JH-F1629-10	GUARD, MUD	1	UR FOR LNME
4	90109-08X03	BOLT	4	
5	90201-08X02	WASHER, PLAIN	4	
6	90183-05X00	NUT, SPRING	2	
7	90183-08X00	NUT, SPRING	2	
8	5JH-F1642-00	GUARD, FLAP	1	UR FOR MBL2/CPY
	5JH-F1642-10	GUARD, FLAP	1	UR FOR LNME
9	90105-08X02	BOLT, WASHER BASED	2	
10	5JH-F1623-00	PLATE, FLAP FITTING 1	1	
11	4UP-F1128-00	BLIND	3	
12	90201-05X01	WASHER, PLAIN	3	

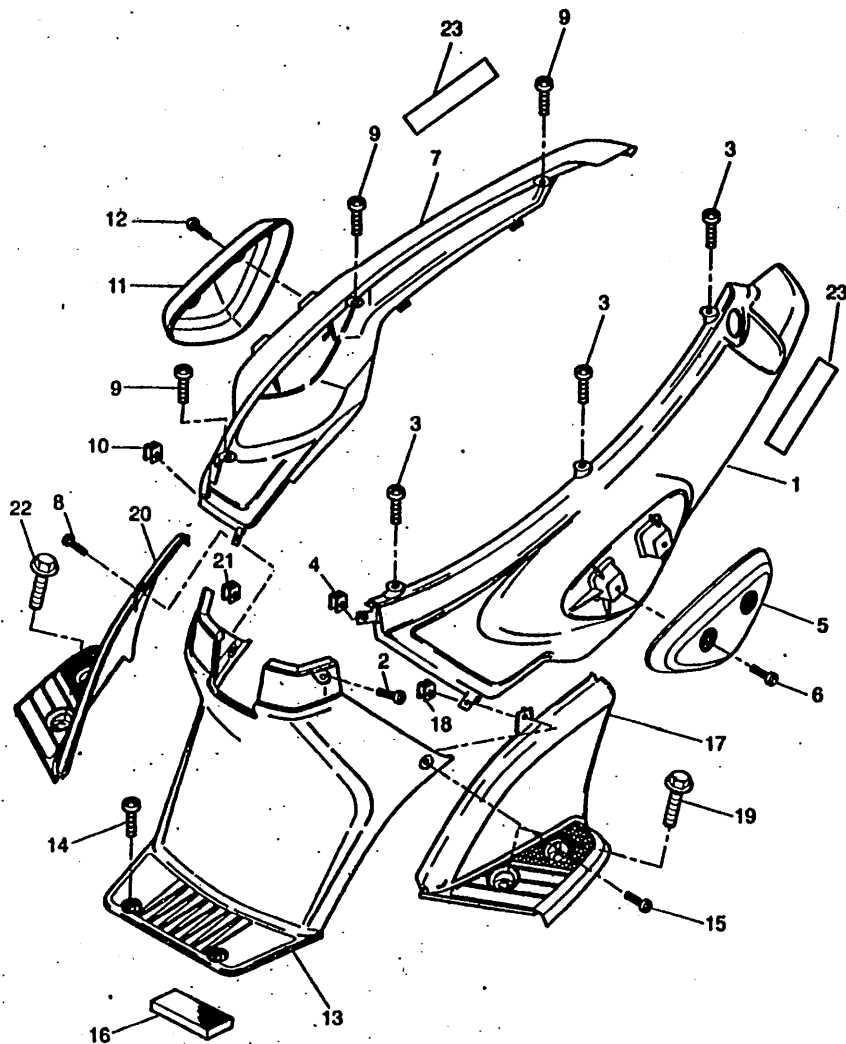


5JH1300-0140

B14

FIG 14 SIDE COVER

REF	PART.N°	DESCRIPTION	QTY	REMARKS
1	5JH-F1731-00-P0	COVER, SIDE 3	1	UR MBL2
	5JH-F1731-00-P2	COVER, SIDE 3	1	UR LNME
	5JH-F1731-00-28	COVER, SIDE 3	1	UR CPY
2	90167-05X02	SCREW M5-12	1	
3	90167-05X01	SCREW M5-16	3	
4	90183-05X00	NUT, SPRING	1	
5	5JH-F1747-00	DAMPER	1	UR FOR MBL2/CPY
	5JH-F1747-10	DAMPER	1	UR FOR LNME
6	90169-05X01	SCREW, TAPPING	2	
7	5JH-F1741-00-P0	COVER, SIDE 4	1	UR MBL2
	5JH-F1741-00-P2	COVER, SIDE 4	1	UR LNME
	5JH-F1741-00-28	COVER, SIDE 4	1	UR CPY
8	90167-05X02	SCREW M5-12	1	
9	90167-05X01	SCREW M5-16	3	
10	90183-05X00	NUT, SPRING	1	
11	5JH-F1747-00	DAMPER	1	UR FOR MBL2/CPY
	5JH-F1747-10	DAMPER	1	UR FOR LNME
12	90169-05X01	SCREW, TAPPING	2	
13	5JH-F1711-00	COVER, SIDE	1	UR FOR MBL2/CPY
	5JH-F1711-10	COVER, SIDE	1	UR FOR LNME
14	90167-05X02	SCREW M5-12	4	
15	90167-05X01	SCREW M5-16	2	
16	5BR-F174X-00	DAMPER	1	
17	5JH-F171E-00	COVER, SIDE 5	1	UR FOR MBL2/CPY
	5JH-F171E-10	COVER, SIDE 5	1	UR FOR LNME
18	90183-05X00	NUT, SPRING	1	
19	90105-06X03	SCREW, FLANGE H M6-40	2	
20	5JH-F171X-00	COVER, SIDE 6	1	UR FOR MBL2/CPY
	5JH-F171X-10	COVER, SIDE 6	1	UR FOR LNME
21	90183-05X00	NUT, SPRING	1	
22	90105-06X03	SCREW, FLANGE H M6-40	2	
23	4RC-F1737-00	EMBLEM	2	



5IH1300-0150

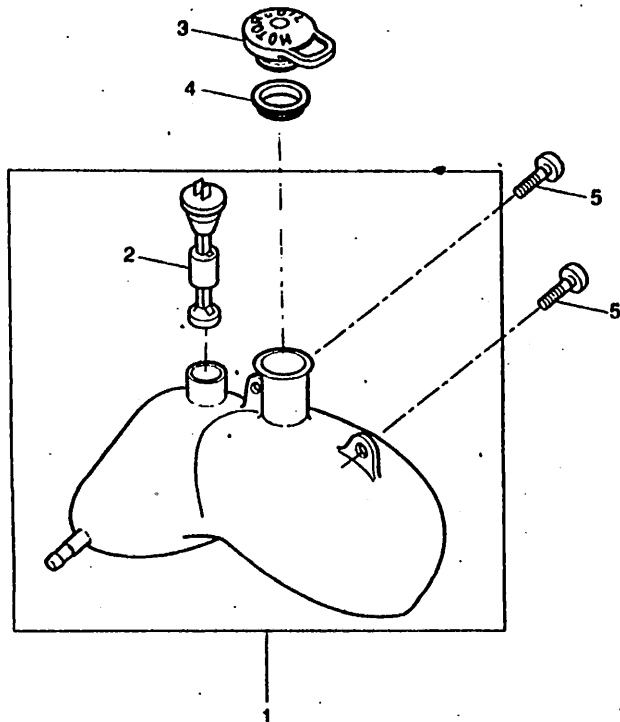


FIG 15 OIL TANK

REF	PART.N°	DESCRIPTION	QTY	REMARKS
1	5JH-WF175-00	OIL TANK ASSY	1	
2	5JH-H5720-00	OIL LEVEL GAUGE ASSY	1	
3	2N3-21771-01	BODY, CAP	1	
4	4SB-F414E-00	SEAL 2	1	
5	90154-06X02	SCREW, BINDING	2	



5JH1351-0160

C2

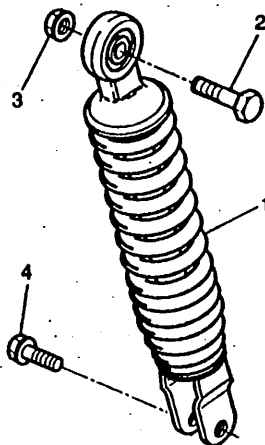
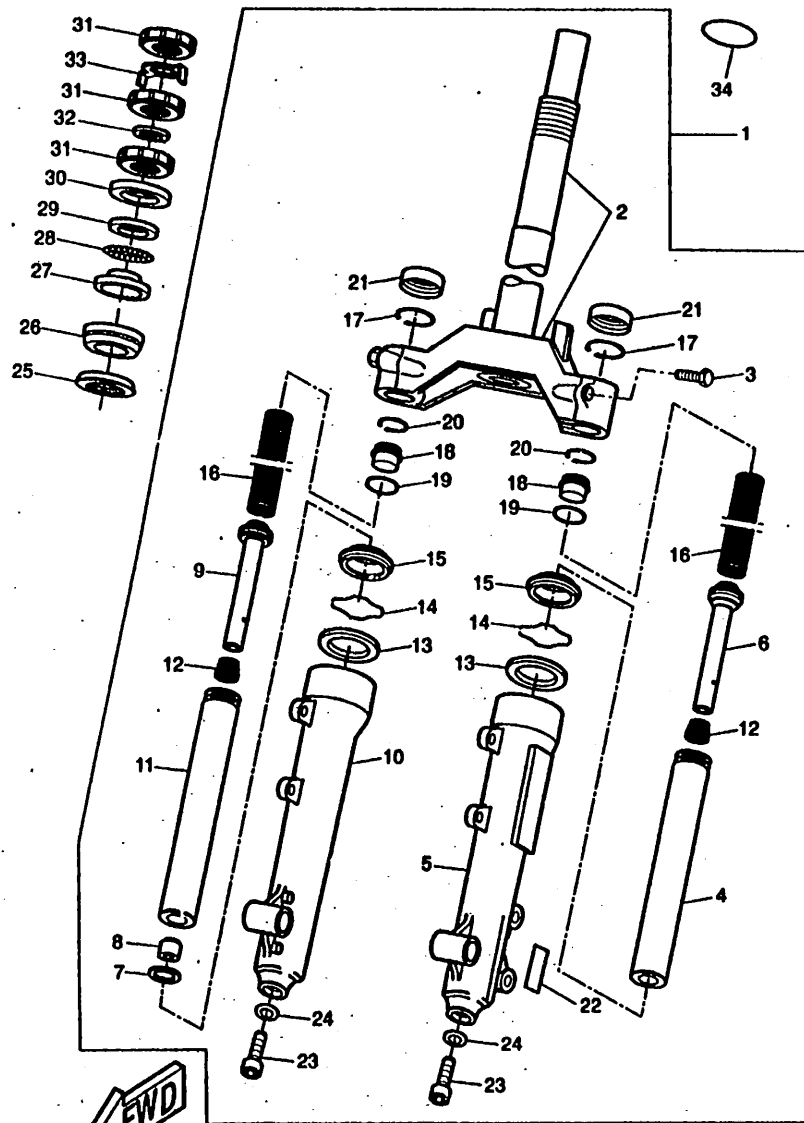


FIG 16 REAR SUSPENSION

REF	PART.N°	DESCRIPTION	QTY	REMARKS
1	5JH-F2210-00	SHOCK ABSORBER ASSY, REAR	1	
2	90101-10776	BOLT	1	
3	95617-10200	BOLT, STUD	1	
4	95617-08030	BOLT, WASHER BASED	1	



5JH1351-0170



5JH1351-0181

FIG 17 FRONT FORK

REF	PART N°	DESCRIPTION	QTY	REMARKS
1	5JH-F3100-00	FRONT FORK ASSY	1	
2	5JH-F3340-00	UNDER BRACKET COMP.	1	
3	5JH-F3394-00	BOLT, SPECIAL	2	
4	5JH-F3110-00	INNER TUBE COMP.1	1	
5	5JH-F3128-00	TUBE, OUTER 1 LEFT	1	
6	5JH-F333K-00	CYLINDER COMP., FRONT FORK	1	
7	5JH-F3165-00	WASHER, FELT	1	
8	5JH-F3173-00	SPINDLE, TAPER	1	
9	5JH-F3170-00	CYLINDER COMP., FRONT FORK	1	
10	5JH-F3136-00	TUBE, OUTER 2 RIGHT	1	
11	5JH-F3120-00	INNER TUBE COMP.2	1	
12	5JH-F3151-00	SPRING, REBOUND	2	
13	5JH-F3145-00	OIL SEAL	2	
14	5JH-F3153-00	RING, SNAP	2	
15	5JH-F3144-00	SEAL, DUST	2	
16	5JH-F3141-00	SPRING, FRONT FORK	2	
17	5JH-F3155-00	RING, FELT	2	
18	5JH-F3154-00	PLUG, INNER TUBE	2	
19	5JH-F3114-00	GASKET	2	
20	5JH-F3183-00	CIRCLIP	2	
21	5JH-F319W-00	CAP	2	
22	5JH-F3108-00	EMBLEM	2	
23	5JH-F3181-00	BOLT, HEXAGON SOCKET HEAD	2	
24	5JH-F3158-00	GASKET	2	
25	21L-F3462-00	SEAL, STEERING	1	
26	93399-99940	BEARING	1	
27	22F-23412-01	RACE, BALL 2	1	
28	93503-16825	BALL	2	
29	22F-23411-01	RACE, BALL 1	1	
30	3VP-23418-00	COVER, BALL RACE 2	1	
31	90179-25033	NUT, POP	3	
32	90202-26X00	WASHER, PLATE	1	
33	5DS-F3418-00	WASHER, SPECIAL	1	
34	5EU-F8328-10	EMBLEM	1	

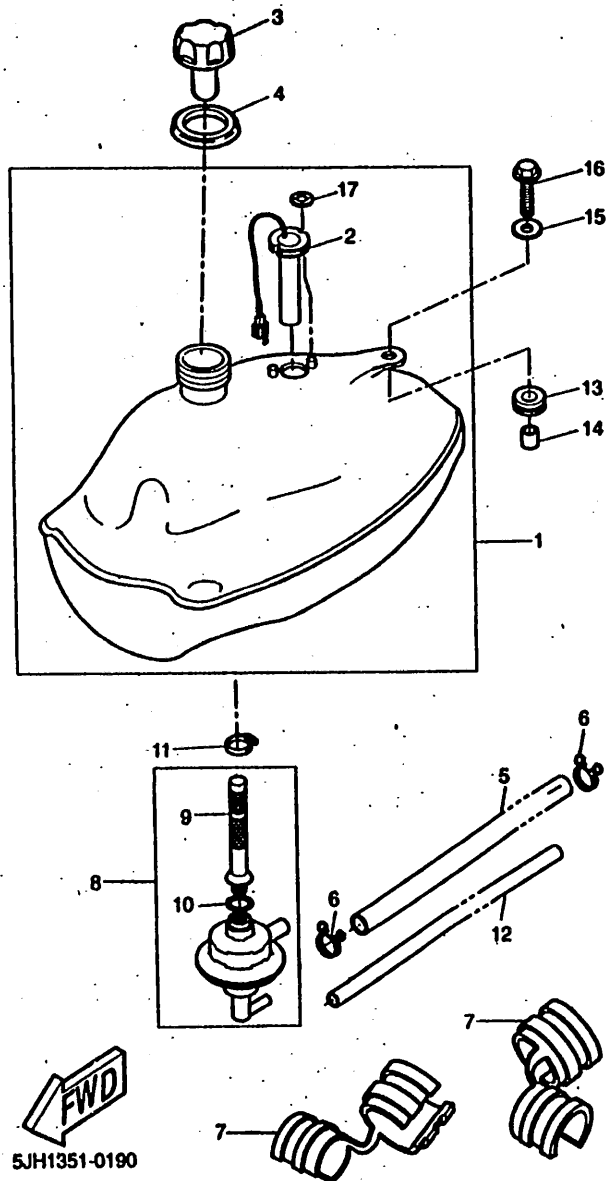
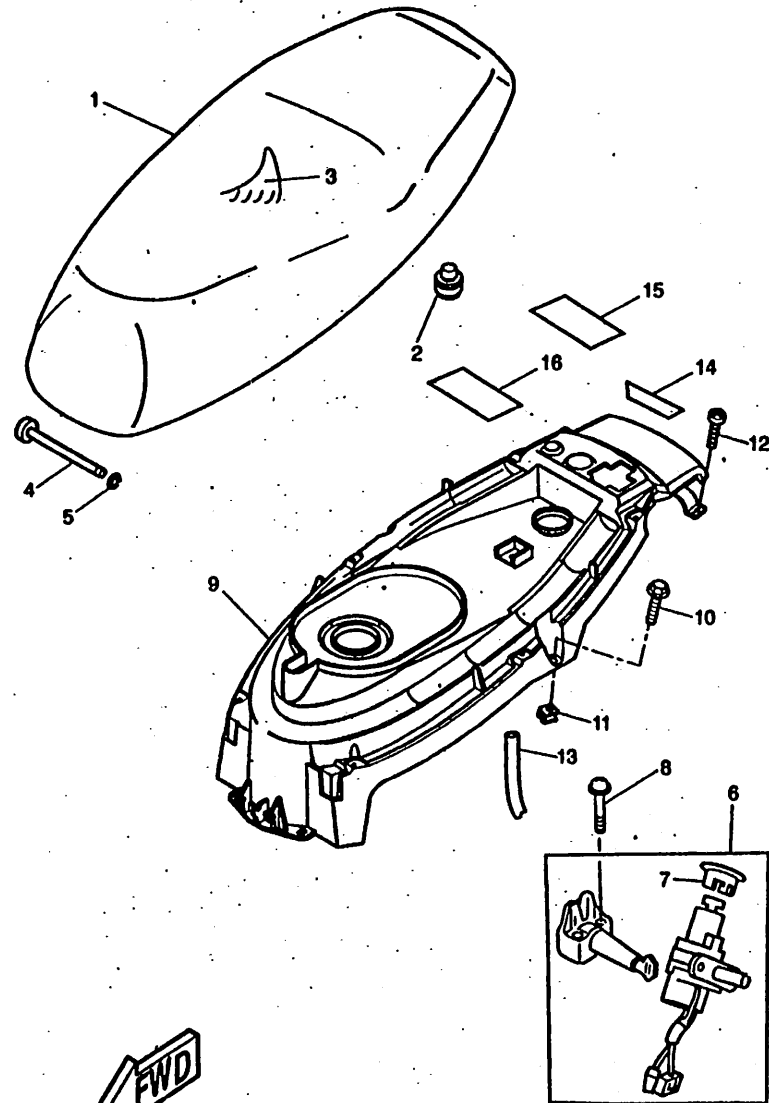


FIG 18 FUEL TANK

REF	PART.N°	DESCRIPTION	QTY	REMARKS
1	5JH-WF411-00	FUEL TANK ASSY	1	
2	5JH-H5752-00	SENDER UNIT ASSY, FUELMETER	1	
3	4MJ-F4810-00	CAP ASSY	1	
4	4SB-F414G-00	SEAL	1	
5	4SB-F4312-41	PIPE 2	1	
6	90467-09008	CLIP	2	
7	5EU-F4181-01	DAMPER, LOCATING 1	2	
8	5BR-F4500-00	FUEL COCK ASSY 1	1	
9	5EU-F4501-00	FILTER, FUEL	1	
10	5EU-F4512-00	GASKET	1	
11	90450-22X00	HOSE CLAMP ASSY	1	
12	4SB-F4335-21	PIPE, SUCTION 1	1	
13	90480-13398	GROMMET	1	
14	90387-060G7	COLLAR	1	
15	90201-065F3	WASHER, PLAIN	1	
16	90105-06X02	BOLT, WASHER BASED	1	
17	90183-04X00	NUT, SPRING	2	

FIG 19 SEAT

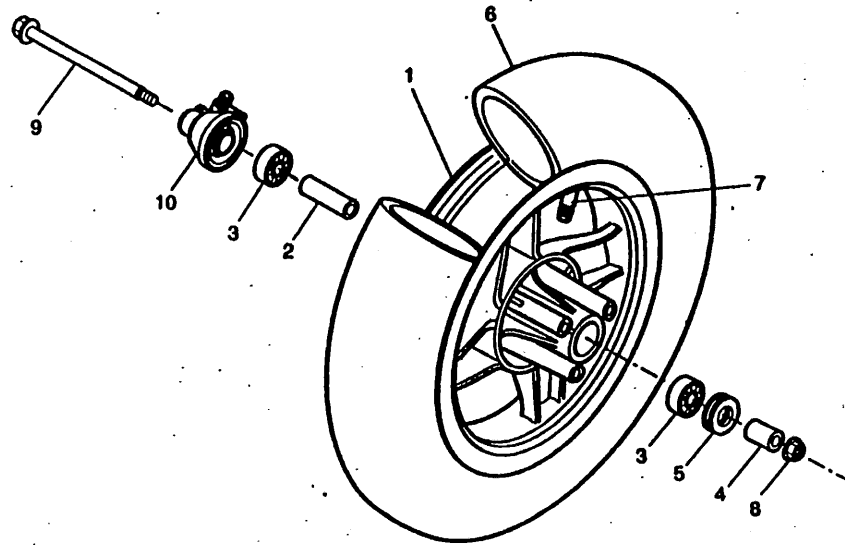


6LH1300-0200

REF	PART.N°	DESCRIPTION	QTY	REMARKS
1	5JH-F4730-00	DOUBLE SEAT ASSY	1	
2	3VL-F4741-00	.PAD, SEAT	3	
3	5JH-F4731-00	COVER, SEAT	1	
4	5EU-F4823-00	PIN 1	1	
5	90488-05X00	CLIP	1	
6	5JH-H2021-00	KEY SET	1	
7	4VV-H2532-00	.CAP	1	
8	90159-08084	SCREW, WITH WASHER	2	
9	5JH-F414A-00	COVER, FILLER	1	UR FOR MBL2/CPY
	5JH-F414A-10	COVER, FILLER	1	UR FOR LNME
10	90105-06X00	BOLT, WASHER BASED	5	
11	90183-08X00	NUT, SPRING	1	
12	90167-05X02	SCREW M5-12	2	
13	4SB-F4318-41	PIPE, OVERFLOW	1	
14	5BR-F152A-00	EMBLEM 3	1	
15	4FG-F415A-00	LABEL, CAUTION	1	
16	5LH-F4875-00	LABEL 1	1	

C6

FIG 20 FRONT WHEEL



REF	PART.N°	DESCRIPTION	QTY	REMARKS
1	5JH-F5168-01	CAST WHEEL, FRONT	1	
2	4SB-F5117-00	SPACER, BEARING	1	
3	93306-300Y8	BEARING	2	
4	90387-10X00	COLLAR	1	
5	93106-20001	OIL SEAL	1	
6		TIRE 120/80-12 55J MAXXIS	1	LM AP CHENG-SHIN
		TIRE 120/80-12 65L BOPPERTL/TT	1	LM AP MICHELIN
7	5BR-F5170-00	AIR VALVE ASSY	1	
8	95617-10200	BOLT, STUD	1	
9	5BR-F2141-00	SHAFT, PIVOT	1	
10	5BR-F5190-00	GEAR UNIT ASSY	1	



5JH1351-0210

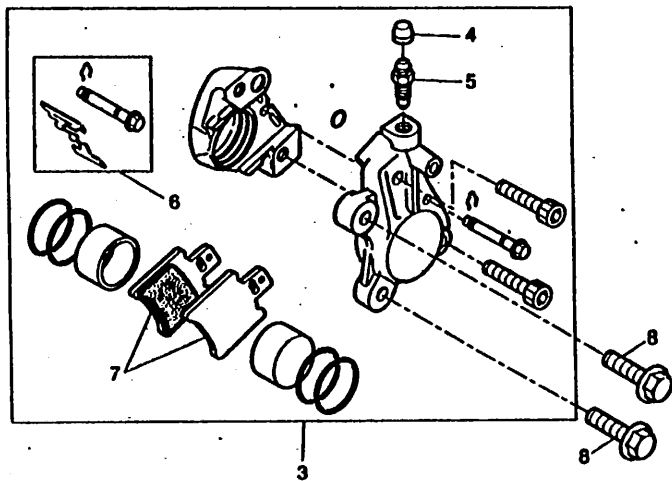
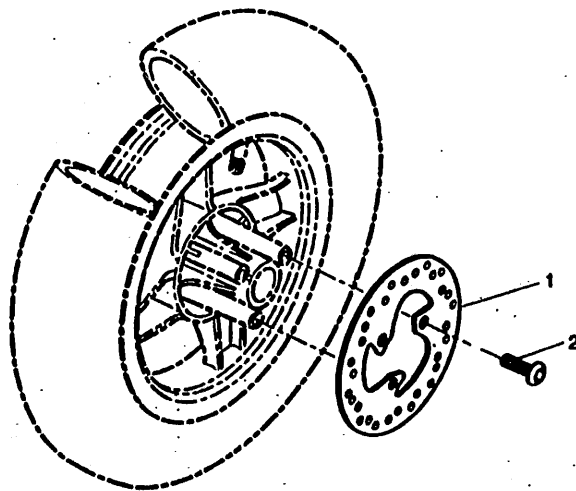


FIG 21 FRONT BRAKE CALIPER

REF	PART.N°	DESCRIPTION	QTY	REMARKS
1	5JH-F5831-00	DISC, BRAKE	1	
2	90111-10X00	BOLT HEX, SOCKET BUTTON	3	
3	5BR-F580V-00	CALIPER ASSY, REAR 1	1	
4	4CU-F5825-00	.CAP	1	
5	4CU-F5824-00	.SCREW, BREED	1	
6	5BR-F5919-00	.SUPPORT, PAD ASSY	1	
7	5BR-F5811-00	.PAD, CALIPER 2	1	
8	90105-08X00	BOLT, WASHER BASED	2	



5JH1351-0220

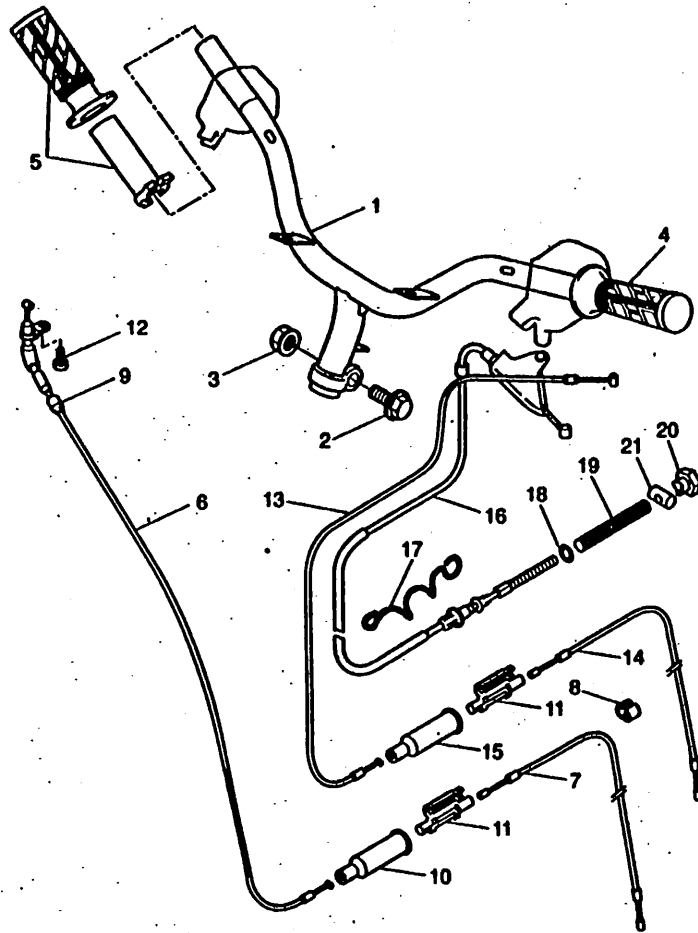


FIG 23 STEERING HANDLE. CABLE

REF	PART.N°	DESCRIPTION	QTY	REMARKS
1	5JH-F6110-00	HANDLE COMP.	1	
2	90105-10036	BOLT, WASHER BASED	1	
3	90185-10154	NUT, SELF-LOCKING	1	
4	5FX-F6241-00	GRIP (LEFT)	1	
5	5FX-F6240-00	GRIP ASSY	1	
6	4UY-F6311-00	CABLE, THROTTLE 1	1	
7	4UY-F6312-00	CABLE, THROTTLE 2	1	
8	90466-15009	CLIP	1	
9	3VL-F6262-00	CAP, CABLE CONNECTOR	1	
10	3WG-F6329-00	CAP, RUBBER	1	
11	3VL-F6261-00	CONNECTOR, CABLE	2	
12	98517-05010	SCREW	1	
13	4SB-F6331-00	CABLE, STARTER 1	1	
14	3VL-F6334-02	CABLE, STARTER 2	1	
15	3WG-F6329-00	CAP, RUBBER	1	
16	5JH-F6351-00	CABLE, BRAKE	1	
17	5JH-F6131-00	GUIDE, CABLE 1	1	
18	90202-08175	WASHER, PLATE	1	
19	90501-12X00	SPRING, COMPRESSION	1	
20	90179-06411	NUT	1	
21	90249-12008	PIN	1	



5JH1351-0240

C10

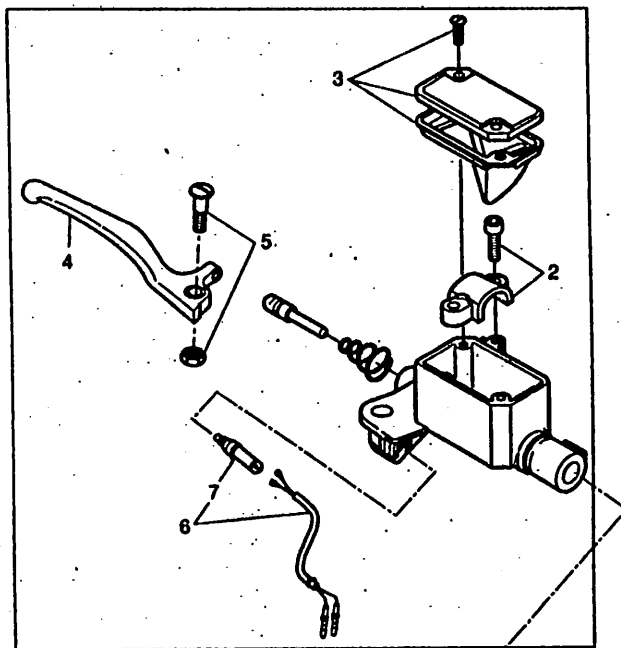
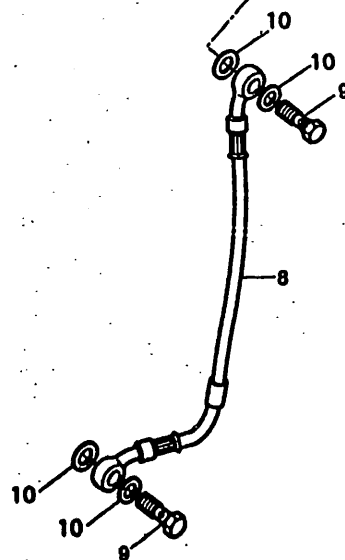


FIG 24 FRONT MASTER CYLINDER

REF	PART.N°	DESCRIPTION	QTY	REMARKS
1	5JH-F583T-00	MASTER CYLINDER ASSY	1	
2	4SB-F5887-00	.BRACKET, MASTER CYLINDER	1	
3	4SB-F5852-00	.CAP, RESERVOIR	1	
4	5JH-H3922-00	.LEVER 2	1	
5	5JH-H3945-00	.BOLT, LEVER	1	
6	5JH-H3980-00	.FRONT STOP SWITCH ASSY	1	
7	NM5-83980-10	.FRONT STOP SWITCH ASSY	1	
8	5JH-F5872-00	HOSE, BRAKE 1	1	
9	90401-10X01	BOLT, UNION	2	
10	90201-10X03	WASHER, PLAIN	4	

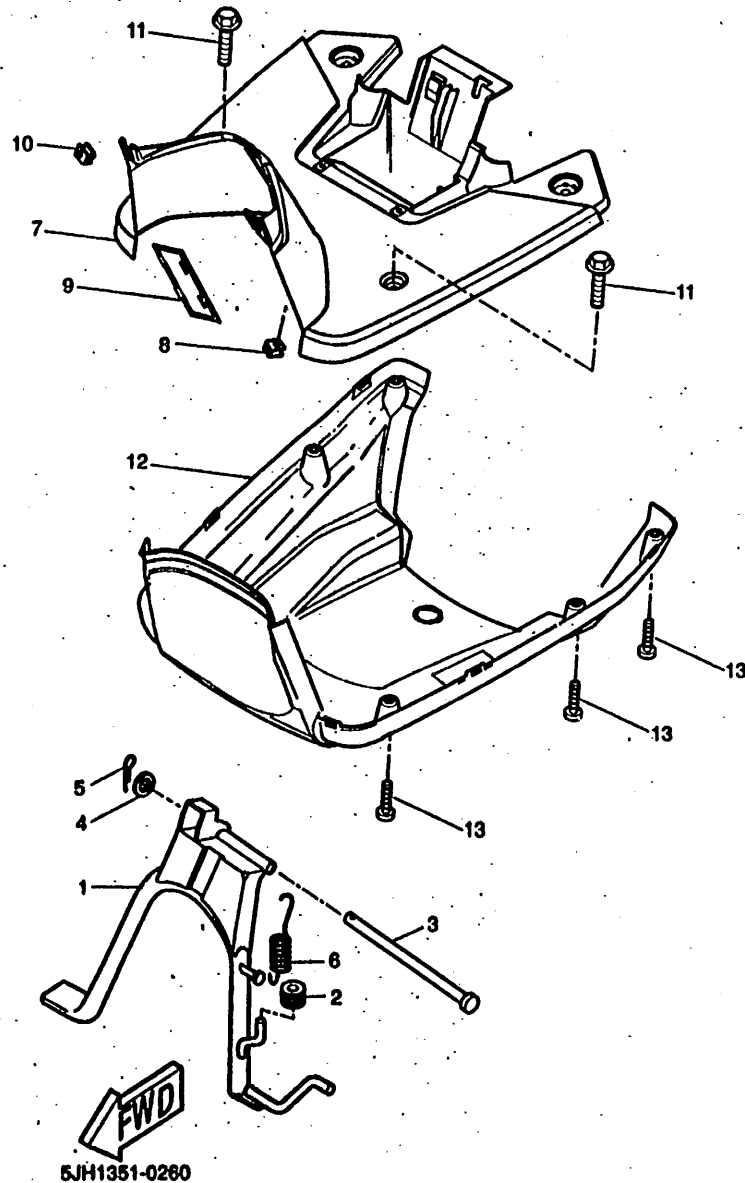


5JH1351-0251



C11

FIG 25 STAND, FOOTREST



REF	PART.N°	DESCRIPTION	QTY	REMARKS
1	5JH-F7111-00	STAND, MAIN	1	YAMAHA BLACK
2	2JW-F7114-10	STOPPER, MAIN STAND	1	
3	90240-08X00	PIN, CLEVIS	1	
4	90202-10120	WASHER, PLATE	1	
5	90488-12008	CLIP	1	
6	90506-32X01	SPRING	1	
7	5JH-F7481-00	BOARD, FOOTREST	1	UR FOR MBL2/CPY
	5JH-F7481-10	BOARD, FOOTREST	1	UR FOR LNME
8	90183-05X00	NUT, SPRING	2	
9	3WV-F8349-10	CAP	1	UR FOR MBL2/CPY
	3WV-F8349-20	CAP	1	UR FOR LNME
10	90183-06X00	NUT, SPRING	1	
11	90105-06X02	BOLT, WASHER BASED	2	
12	5JH-F8385-00	COVER, LOWER	1	UR FOR MBL2/CPY
	5JH-F8385-10	COVER, LOWER	1	UR FOR LNME
13	90169-05X02	SCREW, TAPPING	6	

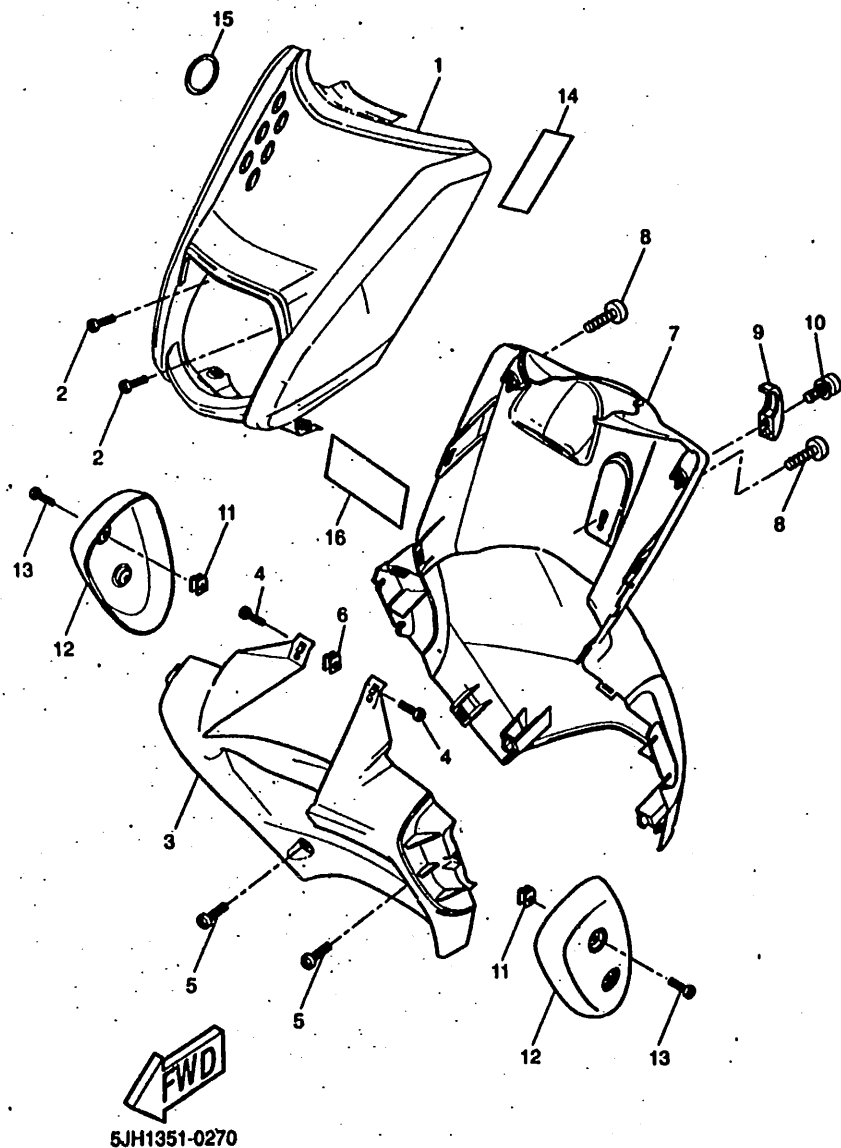
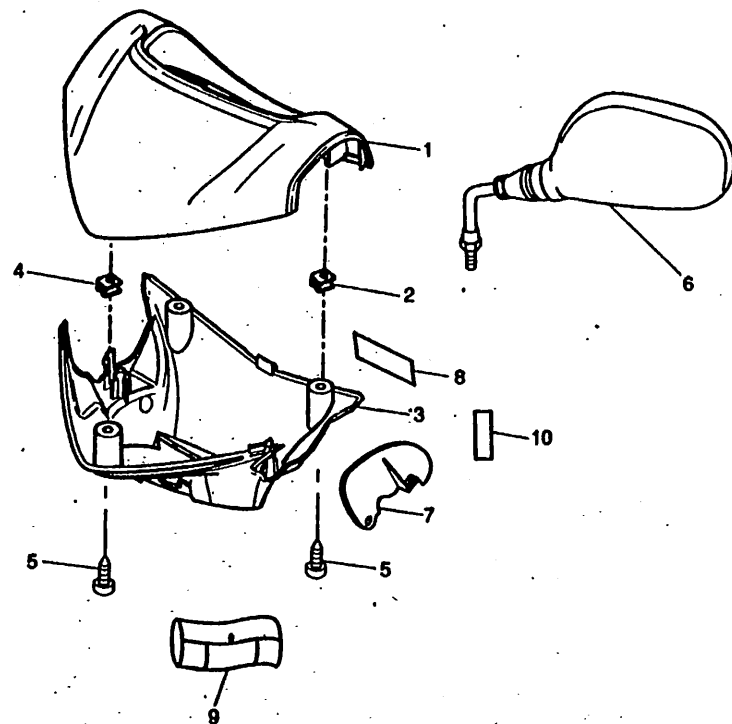


FIG 28 LEG SHIELD

REF	PART.N°	DESCRIPTION	QTY	REMARKS
1	5JH-F835G-00-P0	BODY, FRONT UPPER 1	1	UR MBL2
	5JH-F835G-00-P2	BODY, FRONT UPPER 1	1	UR LNME
	5JH-F835G-00-26	BODY, FRONT UPPER 1	1	UR CPY
2	90167-05X02	SCREW M5-12	2	
3	5JH-F835J-00-P0	BODY, FRONT LOWER 1	1	UR MBL2
	5JH-F835J-00-P2	BODY, FRONT LOWER 1	1	UR LNME
	5JH-F835J-00-26	BODY, FRONT LOWER 1	1	UR CPY
4	90167-05X02	SCREW M5-12	2	
5	90167-05X01	SCREW M5-16	4	
6	90183-05X00	NUT, SPRING	2	
7	5JH-F8311-00-P0	LEG SHIELD 1	1	UR MBL2
	5JH-F8311-00-P2	LEG SHIELD 1	1	UR LNME
	5JH-F8311-00-26	LEG SHIELD 1	1	UR CPY
8	90167-05X02	SCREW M5-12	2	
9	4SB-F1398-00	HANGER, HELMET	1	
10	90154-06X02	SCREW, BINDING	1	
11	90183-05X00	NUT, SPRING	4	
12	5JH-F8371-00	DAMPER	2	UR FOR BL2/CPY
	5JH-F8371-10	DAMPER	2	UR FOR LNME
13	90169-05X01	SCREW, TAPPING	4	
14	5JH-F1788-00	GRAPHIC	1	UR MBL2
	5JH-F1788-10	GRAPHIC	1	UR LNME
	5JH-F1788-20	GRAPHIC	1	UR CPY
15	X01-F153A-00	EMBLEM YAMAHA	1	
16	5JH-F832P-C0	GRAPHIC,18	1	UR MBL2
	5JH-F832P-10	GRAPHIC,18	1	UR LNME
	5JH-F832P-20	GRAPHIC,18	1	UR CPY

FIG 27 COWLING 1



REF	PART.N°	DESCRIPTION	QTY	REMARKS
1	5JH-F6213-00	COVER, UPPER	1	UR FOR MBL2/CPY
	5JH-F6213-10	COVER, UPPER	1	UR FOR LNME
2	90183-05X00	NUT, SPRING	1	
3	5JH-F6144-00	COVER, HANDLEBAR LOWER 1	1	UR FOR MBL2/CPY
	5JH-F6144-10	COVER, HANDLEBAR LOWER 1	1	UR FOR LNME
4	90183-05X00	NUT, SPRING	1	
5	90167-05X01	SCREW M5-16	6	
6	4SB-F6280-00	MIRROR (LEFT)	1	
7	5JH-F6158-00	PLATE, SIDE 1	1	
8	4CU-F1588-20	LABEL, WARNING	1	UR FOR D
9	4BX-F8100-00	TOOL KIT	1	FOR D
10	4CU-F1588-40	LABEL, WARNING	1	UR FOR I/CH
	4CU-F1588-10	LABEL, WARNING	1	UR FOR CH
	4CU-F1588-50	LABEL, WARNING	1	UR FOR NDL



5LH1300-0281

C14

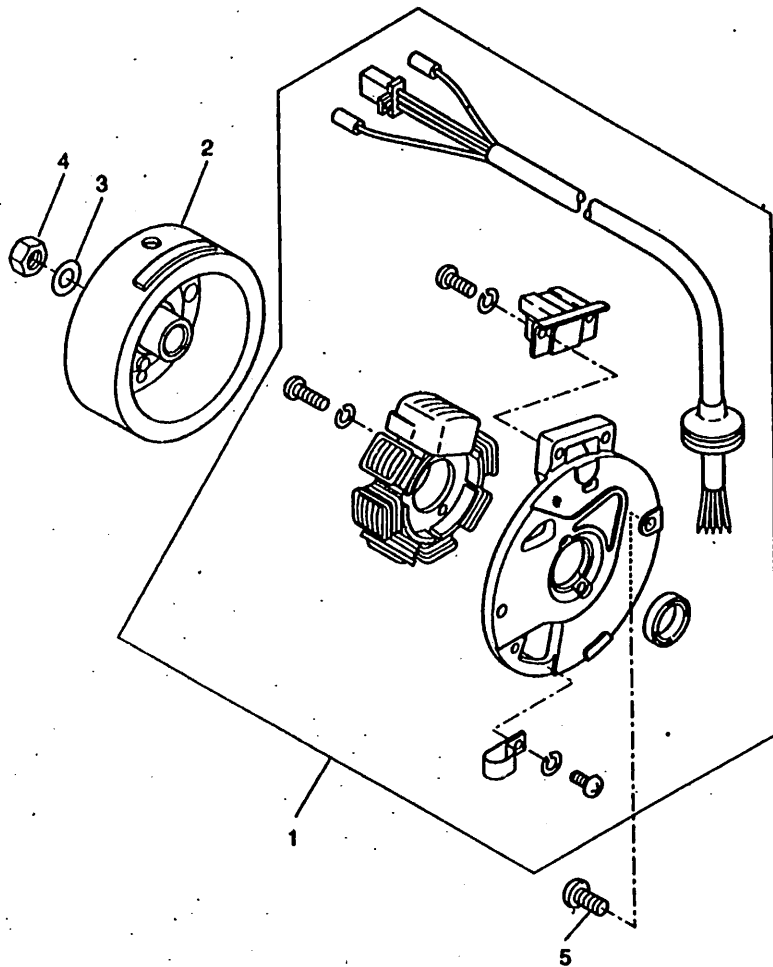


FIG 28 GENERATOR

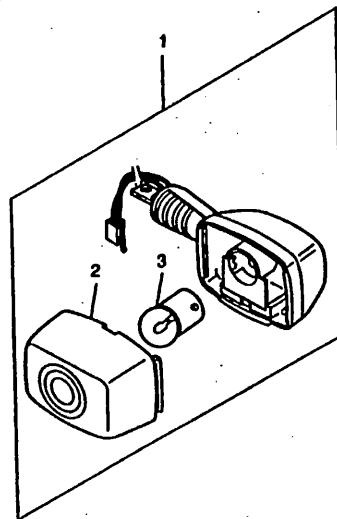
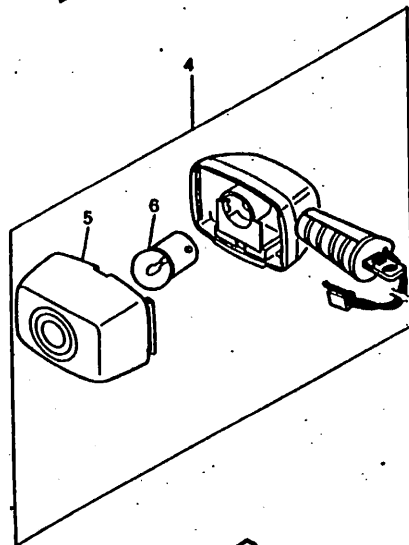
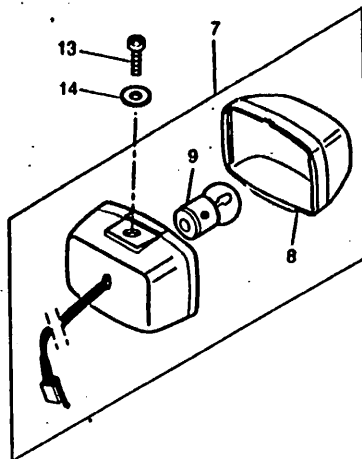
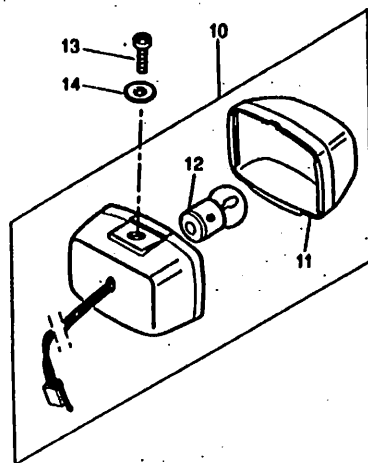
REF	PART.N°	DESCRIPTION	QTY	REMARKS
1	4SB-85500-00	BASE ASSY	1	
2	2JA-85550-00	ROTOR ASSY	1	
3	92901-10600	WASHER, PLAIN	1	
4	90170-10219	NUT	1	
5	98507-08016	SCREW	2	



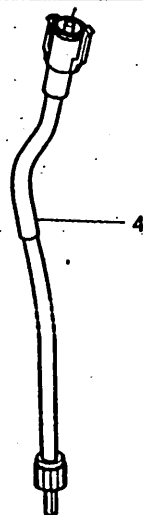
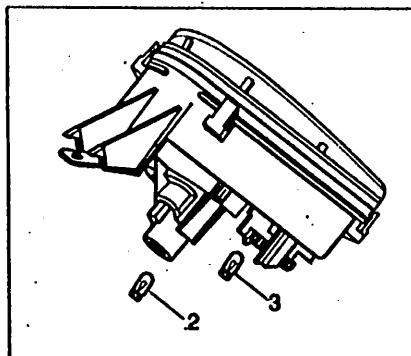
Y3FC010-8290

FIG 29 FLASHER LIGHT

REF	PART.N°	DESCRIPTION	QTY	REMARKS
1	5JH-H3310-00	FRONT FLASHER LIGHT ASSY 1	1	
2	3VL-H3312-00	.LENS, FLASHER	1	
3	NDH-H3311-00-01	.BULB	1	
4	5JH-H3320-00	FRONT FLASHER LIGHT ASSY 2	1	
5	3VL-H3312-00	.LENS, FLASHER	1	
6	NDH-H3311-00-01	.BULB	1	
7	5JH-H3330-00	REAR FLASHER LIGHT ASSY1	1	
8	3VL-H3312-00	.LENS, FLASHER	1	
9	NDH-H3311-00-01	.BULB	1	
10	5JH-H3340-00	REAR FLASHER LIGHT ASSY2	1	
11	3VL-H3312-00	.LENS, FLASHER	1	
12	NDH-H3311-00-01	.BULB	1	
13	90157-05X03	SCREW, PAN HEAD	2	
14	90201-05X00	WASHER, PLAIN	2	



5JH1351-0301



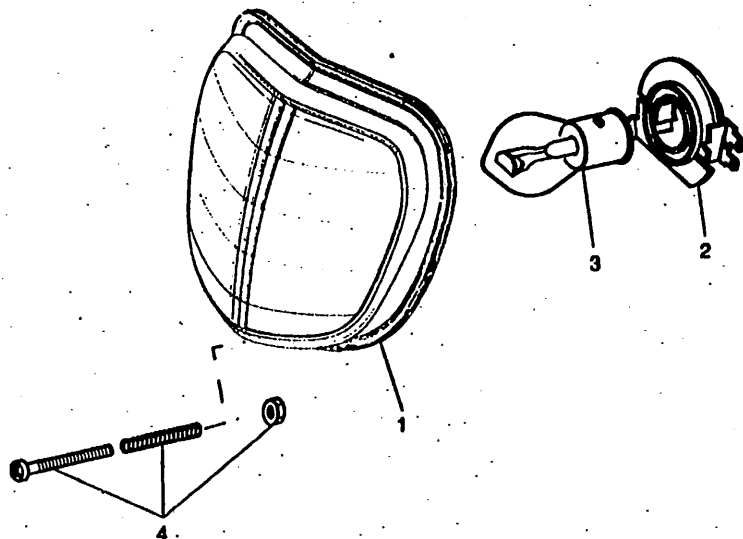
5JH1351-0310

FIG 30 METER

REF	PART N°	DESCRIPTION	QTY	REMARKS
1	5JH-H3510-00	SPEEDOMETER ASSY	1	
2	5BK-H3517-10	BULB 12V-1.2W	2	
3	4SB-H4347-00	BULB 12V-2W	3	
4	4SB-H3550-02	SPEEDOMETER CABLE ASSY	1	

FIG 31 HEADLIGHT

REF	PART.N°	DESCRIPTION	QTY	REMARKS
1	5JH-H4320-00	LENS ASSY	1	
2	4JC-H4340-00	SOCKET CORD ASSY 1	1	
3	4SB-H4314-00	BULB, HEADLIGHT 12V-35/35W BA20	1	
4	5JH-WH413-00	SETTING SCREW SET	1	



5JH1351-0320

D4

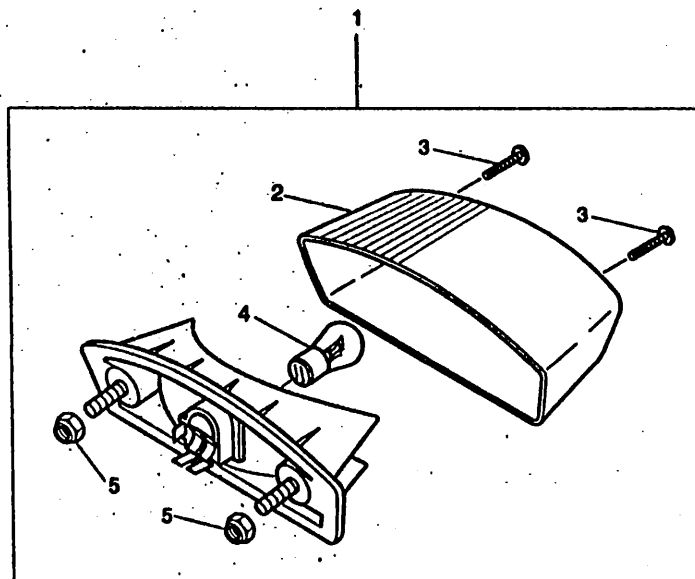
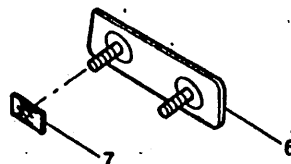


FIG 32 TAILLIGHT

REF	PART.N°	DESCRIPTION	QTY	REMARKS
1	5JH-H4700-00	TAILLIGHT ASSY	1	
2	5JH-H4721-00	LENS, TAILLIGHT	1	
3	5JH-H4724-00	SCREW, LENS FITTING	2	
4	3HL-H4535-00	BULB 12V-5/21W BAY15D	1	
5	90179-06X00	NUT	2	
6	5BK-H5130-00	REAR REFLECTOR ASSY	1	
7	90183-04X00	NUT, SPRING	2	
8	5HE-H5111-00	REFLECTOR, FRONT 1	2	



8



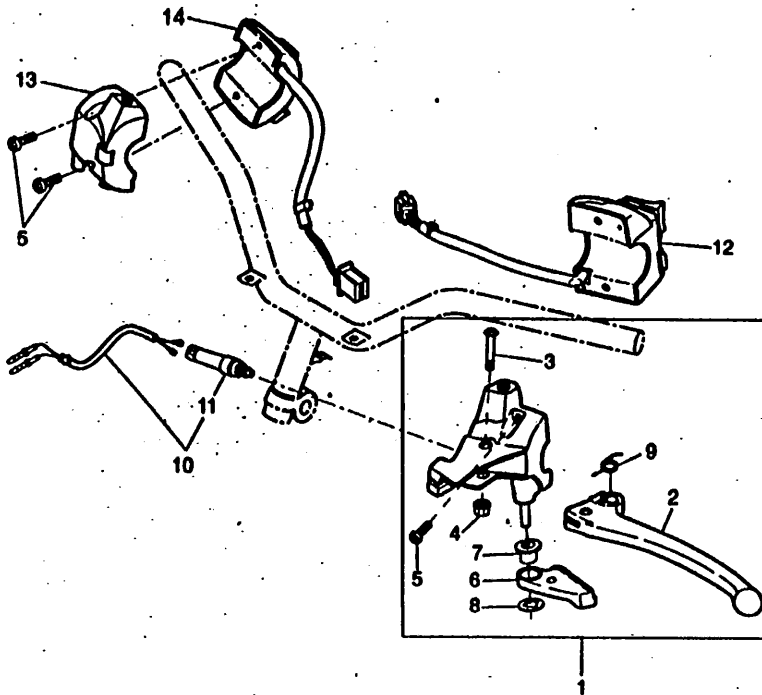
7

8



5JH1351-0330

FIG 33 HANDLE SWITCH. LEVER



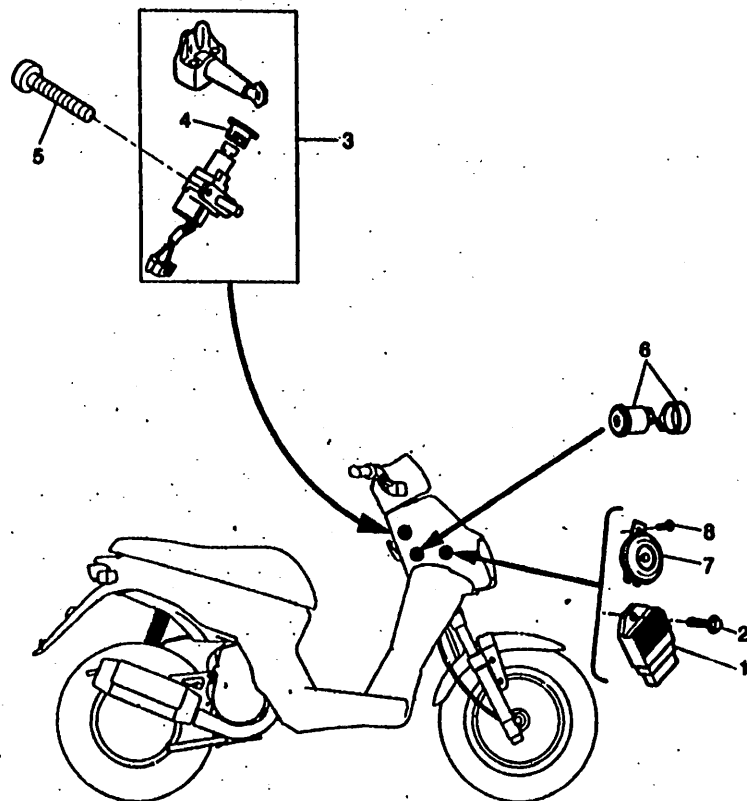
REF	PART.N°	DESCRIPTION	QTY	REMARKS
1	5JH-H2910-00	LEVER HOLDER ASSY (LEFT)	1	
2	5JH-H3912-00	LEVER 1	1	
3	3VL-H3915-00	SCREW, LEVER FITTING	1	
4	3VL-H3916-00	NUT, LEVER FITTING	1	
5	3VL-H3945-00	BOLT, LEVER	2	
6	4SB-H3941-00	LEVER, STARTER	1	
7	3VL-H3982-00	COLLAR, DECOMPRESSIO	1	
8	3VL-H3943-00	WASHER, STARTER	1	
9	4KH-H3962-00	SPRING	1	
10	5JH-H3980-00	FRONT STOP SWITCH ASSY	1	
11	NM5-83980-10	FRONT STOP SWITCH ASSY	1	
12	5JH-H3976-00	SWITCH, HANDLE 1	1	
13	4CU-H3987-01	CASE, SWITCH LOWER	1	
14	5JH-H3975-00	SWITCH, HANDLE 2	1	



5LH1300-0340

D6

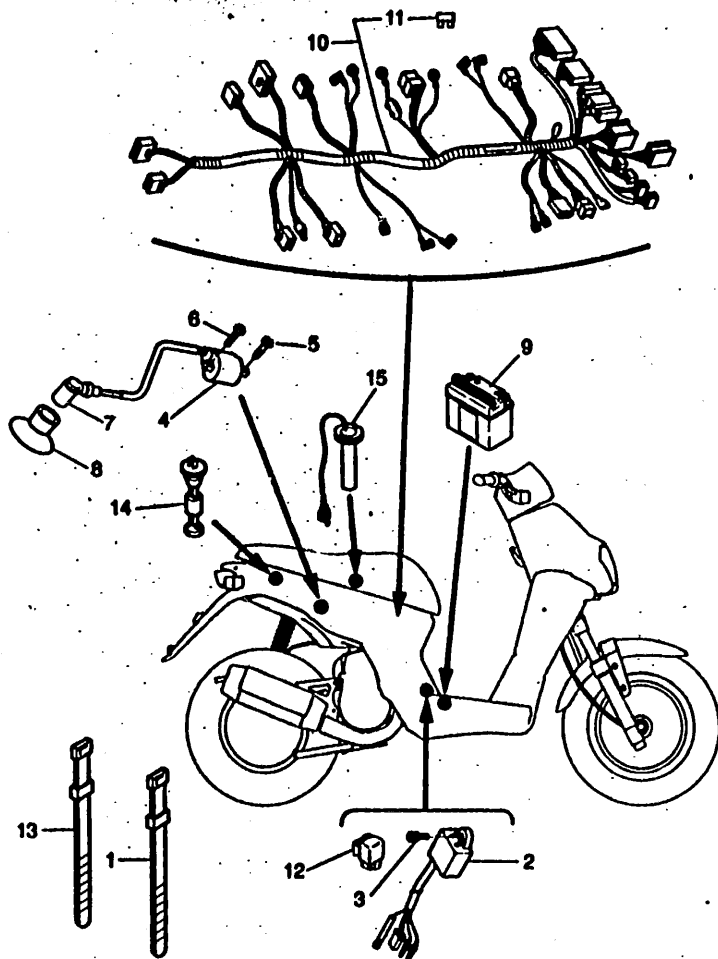
FIG 34 ELECTRICAL1



REF	PART.N°	DESCRIPTION	QTY	REMARKS
1	4VV-H1960-00	RECTIFIER & REGULATOR ASSY	1	
2	90105-06898	BOLT, FLANGE	1	
3	5JH-H2021-00	KEY SET	1	
4	4VV-H2532-00	.CAP	1	
5	90109-06851	BOLT	2	
6	5BR-H3350-01	FLASHER RELAY ASSY	1	
7	35R-83371-30	HORN	1	
8	98507-06010	SCREW	1	

5JH1351-0350

FIG 35 ELECTRICAL2



5JH1351-0361

REF	PART.N°	DESCRIPTION	QTY	REMARKS
1	4KH-H3938-01	BAND SWITCH CORD (249X4.8)	3	
2	3KJ-85540-10	C.D.I. UNIT ASSY	1	
3	90154-06X02	SCREW, BINDING	1	
4	4KJ-82310-00	IGNITION COIL ASSY	1	
5	90153-08034	SCREW, HEXAGON	1	
6	97017-08016	BOLT	1	
7	3WG-H2370-00	PLUG CAP ASSY	1	
8	3WG-H2372-00	SEAL, PLUG CAP	1	
9	4CU-H2110-20	BATTERY ASSY	1	UR FIAMM
	4SB-H2110-00	BATTERY ASSY	1	UR YUASA
10	5JH-H2590-00	WIRE HARNESS ASSY	1	
11	5BR-H2151-00	.FUSE	1	
12	5DS-H1950-00	RELAY ASSY	1	
13	4KH-H3938-01	BAND SWITCH CORD (249X4.8)	9*	
14	5JH-H5720-00	OIL LEVEL GAUGE ASSY	1	
15	5JH-H5752-00	SENDER UNIT ASSY, FUEL METER	1	



NUMERICAL INDEX

3YJ- 11610-00	B3	35R- 83371-30	D7	45B- E5650-00	B10	5JH- F1747-00	B15	3VL- F4741-10	B13	3WV- F8349-20	C12
4JP- 11621-00-A0	B3	NM5- 83980-10	C11	3VL- E5659-00	B9	5JH- F1747-10	B15	5LH- F4875-00	C6	5JH- F835G-00-26	C13
3AA- 1310L-02	B	NM5- 83980-10	D8	3VL- E5659-00	B10	5JH- F1747-10	B15	4SB- F5117-00	C7	5JH- F835G-00-P0	C13
3AA- 13124-00	B5	3KJ- 85540-10	D8	3VL- E5673-00	B10	5BR- F174X-00	B15	5JH- F5168-01	C7	5JH- F835G-00-P2	C13
3WF- 13185-00	B5	2JA- 85550-00	C15	3VL- E6111-00	B11	5JH- F1788-00	C13	5BR- F5170-00	C7	5JH- F835J-00-26	C13
1YU- 13167-00	B5	4SB- 85560-00	C15	1TK- E6134-00	C9	5JH- F1788-10	C13	3VL- F5170-10	C9	5JH- F835J-00-P0	C13
1YU- 13418-00	B5	5FX- E1111-00	B2	5JH- E6611-00	B11	5JH- F1788-20	C13	5BR- F5190-00	C7	5JH- F835J-00-P2	C13
1YU- 13473-00	B5	3VL- E1181-00	B2	5JH- E6620-00	B11	5BR- F2141-00	C7	3VL- F5326-00	C9	5JH- F8371-00	C13
1YU- 13516-00	B5	5FX- E1311-00	B2	5JH- E9626-00	B11	5JH- F2210-00	C3	5JH- F5338-00	C9	5JH- F8371 10	C13
1YU- 13577-00	B5	3VL- E1351-00	B2	45B- E7410-00	B12	3HL- F2245-00	B8	4VU- F5355-00	C9	5JH- F8385-00	C12
2FX- 13610-00	B8	3VL- E1400-10	B3	5AD- E7420-00	B12	5JH- F3100-00	C4	3VL- F5384-00	C9	5JH- F8385 10	C12
4KN- 13621-00	B8	3VL- E1633-00	B3	3VL- E7694-00	B11	5JH- F3108-00	C4	5BR- F580V-00	C8	4SB- H1800-00	B10
1YU- 14103-00	B7	3VL- E2611-01	B4	3VL- E7611-00	B11	5JH- F3110-00	C4	5BR- F5811-00	C8	5DS- H1950-00	D8
14T- 14104-00	B7	5FX- E262H-00	B4	4CU- E7620-00	B11	5JH- F3114-00	C4	4CU- F5824-00	C8	4VU- H1990-00	D7
14T- 14104-00	B7	3VL- E2651-00	B4	3VL- E7623-00	B11	5JH- F3120-00	C4	4CU- F5825-00	C8	5JH- H2021-00	C6
1UJ- 14106-00	B7	5FX- E2653-00	B4	5JH- E7632-00	B11	5JH- F3126-00	C4	5JH- F5831-00	C8	5JH- H2021-00	D7
1YU- 14126-00	B7	3VL- E2658-00	B4	3VL- E7633-00	B11	5JH- F3136-00	C4	5JH- F583T-00	C11	4SB- H2110-00	D8
14T- 14109-00	B7	3VL- E2658-00	B4	4EF- E7654-00	B11	5JH- F3141-00	C4	4SB- F5852-00	C11	4CU- H2110-20	D8
1UJ- 14169-00	B7	3VL- E3178-00	B5	5EU- E7660-00	B11	5JH- F3144-00	C4	4SB- F5867-00	C11	5BR- H2151-00	D8
1YU- 14197-01	B7	3VL- E3555-00	B6	5EU- E7664-00	B11	5JH- F3145-00	C4	5JH- F5872-00	C11	3WG- H2370-00	D8
1YU- 14283-01	B7	1TK- E3573-00	B9	5EU- E7870-00	B11	5JH- F3151-00	C4	5BR- F5919-00	C8	3WG- H2372-00	D8
5LH- 14301-00	B7	5FX- E4410-00	B8	4UP- F1110-00	B13	5JH- F3153-00	C4	5JH- F8110-00	C10	4VU- H2532-00	C6
3KJ- 14312-25	B7	3VL- E4429-00	B6	5JH- F1128-00	B14	5JH- F3154-00	C4	5JH- F6131-00	C10	4VU- H2532-00	D7
1YU- 14331-00	B7	3VL- E4437-00	B6	4SB- F1238-00	B9	5JH- F3155-00	C4	5JH- F6144-00	C14	5JH- H2540-00	D8
1YU- 14335-00	B7	4MJ- E4445-00	B8	4SB- F1398-00	C13	5JH- F3158-00	C4	5JH- F6144-10	C14	5JH- H2591-00	D6
3VR- 14341-00	B7	3VL- E4451-00	B6	5JH- F1410-00	B13	5JH- F3165-00	C4	5JH- F6158-00	C14	5JH- H3310-00	D2
14T- 14343-40	B7	3VL- E4452-00	B6	5BR- F152A-00	C6	5JH- F3170-00	C4	5JH- F6213-00	C14	NDH- H3311-00-01	D2
3AA- 14349-00	B7	4VA- E4453-00	B6	X01- F153A-00	C13	5JH- F3173-00	C4	5JH- F6213-10	C14	NDH- H3311-30-01	D2
3KJ- 14353-21	B7	3VL- E4565-00	B6	5JH- F1556-00	B14	5JH- F3181-00	C4	5FX- F6240-00	C10	NDH- H3311-00-01	D2
1YU- 14371-00	B7	5LH- E4610-00	B8	5JH- F1556-10	B14	5JH- F3183-00	C4	5FX- F6241-00	C10	NDH- H3311-00-01	D2
1YU- 14384-00	B7	4VU- E4729-01-33	B8	4CU- F1568-10	C14	5JH- F319W-00	C4	3VL- F6261-00	C10	3VL- H3312-0C	D2
1YU- 14385-00	B7	5EU- E4779-00	B8	4CU- F1568-20	C14	5JH- F333K-00	C4	3VL- F6262-00	C10	3VL- H3312-00	D2
14T- 14386-00	B7	3VL- E5128-00	B9	4CU- F1568-40	C14	5JH- F3340-00	C4	4SB- F6280-00	C14	3VL- H3312-00	D2
2JA- 14392-00	B7	3VL- E5150-00	B9	4CU- F1568-50	C14	5JH- F3394-00	C4	4UY- F6311-00	C10	3VL- H3312-00	D2
3HK- 14613-00	B8	1TK- E5167-00	B9	5JH- F1623-00	B14	5DS- F3418-00	C4	4UY- F6312-00	C10	5JH- H3320-00	D2
3WX- 14766-00	B8	3VL- E5317-00	B9	5JH- F1629-00	B14	21L- F3462-00	C4	3WG- F6329-00	C10	5JH- H3330-00	D2
4FW- 1490J-00	B7	3VL- E5363-00	B9	5JH- F1629-10	B14	5JH- F414A-00	C6	3WG- F6329-00	C10	5JH- H3340-00	D2
3AA- 15513-00	B10	3VL- E5371-00	B9	5JH- F1642-00	B14	5JH- F414A-10	C6	4SB- F6331-00	C10	5BR- H3350-01	D7
3VL- 15570-00	B10	3VL- E5411-10	B9	5JH- F1642-10	B14	4SB- F414E-00	C2	3VL- F6334-02	C10	5JH- H3510-00	D3
3ES- 15601-02	B10	3VL- E5421-00	B9	5JH- F1711-00	B15	4SB- F414G-00	C5	5JH- F6351-00	C10	5BK- H3517-10	D3
3KJ- 15657-00	B11	3VL- E5451-00	B9	5JH- F1711-10	B15	4FG- F415A-00	C6	5JH- F7111-00	C12	4SB- H3550-02	D3
3AA- 17641-00	B11	3VL- E5461-00	B9	5JH- F171E-00	B15	5EU- F4181-01	C5	2JW- F7114-10	C12	5JH- H3912-00	D6
5G3- 21481-00	B13	3VL- E5462-00	B9	5JH- F171E-10	B15	4SB- F4312-41	C5	5JH- F7481-00	C12	3VL- H3915-00	D6
2N3- 21771-01	C2	1TK- E5481-00	B6	5JH- F171X-00	B15	4SB- F4318-41	C6	5JH- F7481-10	C12	3VL- H3916-00	D6
16A- 22216-00	B9	1TK- E5481-00	B9	5JH- F171X-10	B15	4SB- F4335-21	C5	4BX- F8100-00	C14	5JH- H3922-00	C11
22F- 23411-01	C4	1TK- E5481-00	B10	5JH- F1731-00-26	B15	5BR- F4500-00	C5	5JH- F8311-00-26	C13	4KH- H3936-01	D8
22F- 23412-01	C4	1TL- E5481-00	B9	5JH- F1731-00-P0	B15	5EU- F4501-00	C5	5JH- F8311-00-P0	C13	4KH- H3936-01	D8
3VP- 23416-00	C4	1TL- E5481-00	B9	5JH- F1731-00-P2	B15	5EU- F4512-00	C5	5JH- F8311-00-P2	C13	4SB- H3941-00	D6
3Y6- 2533A-01	C9	1TL- E5481-00	B9	4RC- F1737-00	B15	4MJ- F4610-00	C5	5EU- F8328-10	C4	3VL- H3943-00	D6
3AA- 25351-00	C9	3VL- E5528-00	B10	5JH- F1741-00-26	B15	5EU- F4623-00	C6	5JH- F832P-00	C13	3VL- H3945-00	D6
1YU- 81801-M0	B10	3VL- E5532-00	B10	5JH- F1741-00-P0	B15	5JH- F4730-00	C6	5JH- F832P-10	C13	5JH- H3945-00	C11
53L- 8181Y-M0	B10	5FX- E5620-01	B10	5JH- F1741-00-P2	B15	5JH- F4731-00	C6	5JH- F832P-20	C13	4KH- H3952-00	D6
4KJ- 82310-00	D8	4SB- E5631-00	B10	5JH- F1747-00	B15	3YL- F4741-00	C6	3WV- F8349-10	C12	5JH- H3975-00	D6

NUMERICAL INDEX

5JH- H3976-00	D6	90101-06X05	C9	90179-25033	C4	90430-08206	B9	93450-11818	B3
5JH- H3980-00	C11	90101-10776	C3	90179-28X00	B11	90445-083J5	B5	93503-16825	C4
5JH- H3980-00	D6	90105-06696	D7	90183-04X00	C5	90446-13311	B9	93603-12007	B5
3VL- H3982-00	D6	90105-06X00	C6	90183-04X00	D5	90450-22X00	C5	94701-00195	B2
4CU- H3987-01	D6	90105-06X02	B14	90183-05X00	B13	90450-32X01	B6	95617-10200	C3
4SB- H4314-00	D4	90105-09X02	C5	90183-05X00	B14	90464-22X00	B13	95617-10200	C7
5JH- H4320-00	D4	90105-06X02	C12	90183-05X00	B15	90465-08X00	B9	95707-06500	B2
4JC- H4340-00	D4	90105-06X03	B15	90183-05X00	B15	90467-08003	B5	95817-08020	D8
4SB- H4347-00	D3	90105-06X03	B15	90183-05X00	B15	90467-09006	C5	95817-08030	C3
3HL- H4535-00	D5	90105-08X00	C8	90183-05X00	B15	90467-24140	B6	95817-08040	D8
5JH- H4700-00	D5	90105-08X04	B9	90183-05X00	C12	90468-02033	B5	97017-06016	D8
5JH- H4721-00	D5	90105-10036	C10	90183-05X00	C13	90468-02X00	B5	97885-05012	B7
5JH- H4724-00	D5	90105-10297	B13	90183-05X00	C13	90468-05X00	C6	97885-06016	B4
5HE- H5111-00	D5	90109-06851	D7	90183-05X00	C14	90468-12006	C12	98507-05014	B5
5BK- H5130-00	D5	90109-08X03	B14	90183-05X00	C14	90468-15009	C10	98507-06010	D7
5JH- H5720-00	C2	90110-06925	B9	90183-06X00	B13	90480-12237	B4	98507-06016	C15
5JH- H5720-00	D8	90110-06X16	B10	90183-06X00	B14	90480-12237	B4	98517-05010	C10
5JH- H5752-00	C5	90111-10X00	C8	90183-06X00	C6	90480-12497	B6	98517-06012	B9
5JH- H5752-00	D8	90116-06418	B2	90183-06X00	C12	90480-13398	C5	98517-06012	B10
4BX- W2536-00	C9	90149-06X02	B6	90185-10154	B13	90501-12X00	C10	98517-06020	B4
5JH- WF175-00	C2	90153-06022	B4	90185-10154	C10	90501-35X00	B11	98517-06020	B6
5JH- WF411-00	C5	90153-06034	D8	90185-14070	C9	90506-15260	C9	98580-03005	B7
5JH- WM1413-00	D4	90153-06051	B8	90201-05X00	D2	90506-32X01	C12	98580-04016	B7
		90154-06X02	C2	90201-05X01	B14	90508-32609	B10	99009-15400	B5
		90154-06X02	C13	90201-055F3	C5	92901-05100	B7	99009-15400	B10
		90154-06X02	D8	90201-06X01	C9	92901-10600	C15	99009-19400	B5
		90154-05X05	B8	90201-08X00	B10	92907-06600	B4	99510-12016	B9
		90154-06X05	B14	90201-08X02	B14	92907-06600	B6	99530-10014	B9
		90157-05X03	D2	90201-10X03	C11	92990-04100	B7	99530-10014	B9
		90159-05064	C6	90201-133M8	B11	92990-06600	B4		
		90167-03X04	B4	90201-140G5	B12	92995-06100	B4		
		90167-05X01	B15	90201-142M6	C9	93101-20138	B3		
		90167-05X01	B15	90201-154E9	B10	93102-17342	B11		
		90167-05X01	C13	90201-177G4	C9	93102-20371	B3		
		90167-05X01	C14	90201-574L1	B10	93102-22897	B12		
		90167-05X02	B15	90202-08175	C10	93106-20001	C7		
		90167-05X02	B15	90202-10120	C12	93109-33826	B11		
		90167-05X02	B15	90202-26X00	C4	93210-07X00	C9		
		90167-05X02	B15	90208-10012	B11	93210-14104	B9		
		90167-05X02	C6	90208-14047	B12	93210-23614	B10		
		90167-05X02	C13	90214-13055	B11	93210-39X00	B11		
		90167-05X02	C13	90240-08X00	C12	93306-00201	B9		
		90167-05X02	C13	90249-12008	C10	93306-20009	B11		
		90169-05X01	B15	90280-03017	B3	93306-20009	B12		
		90169-05X01	B15	90380-15X00	B10	93306-203Y0	B11		
		90169-05X01	C13	90387-06023	B4	93306-203YF	B12		
		90169-05X02	C12	90387-06023	B4	93306-204X2	B3		
		90170-10219	B11	90387-060G7	C5	93306-300Y8	C7		
		90170-10219	C15	90387-067V1	B6	93310-210M0	B3		
		90170-10X01	B11	90387-10X00	C7	93310-257R1	B10		
		90179-06411	C10	90387-135U9	B11	93399-99940	C4		
		90179-06X00	D5	90387-156U0	B3	93410-06827	B11		
		90179-10279	B13	90401-10X01	C11	93420-40064	B12		